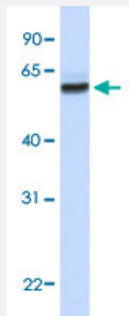


NUP62 polyclonal antibody

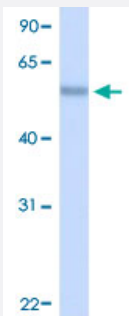
Catalog # PAB29933 Size 100 uL

Applications



Western Blot (Tissue lysate)

Western Blot analysis of human fetal brain tissue lysate with NUP62 polyclonal antibody (Cat # PAB29933) at 0.2-1 ug/mL working concentration.

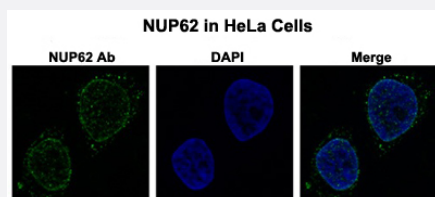


Western Blot (Tissue lysate)

Western Blot analysis of human fetal lung tissue lysate with NUP62 polyclonal antibody (Cat # PAB29933) at 1 ug/mL working concentration.

Immunofluorescence

Immunofluorescent staining of HeLa cells with NUP62 polyclonal antibody (Cat # PAB29933) at 0.25 ug/mL working concentration.



Specification

Product Description

Rabbit polyclonal antibody raised against synthetic peptide of human NUP62.

Immunogen

A synthetic peptide corresponding to N-terminus of human NUP62.

Sequence	SGFNFGGTGAPTGGFTFGTAKTATTTTPATGFSFSTSGTGGFNFGAPFQPA
Host	Rabbit
Theoretical MW (kDa)	53
Reactivity	Human
Form	Liquid
Purification	Affinity purification
Recommend Usage	Immunofluorescence (0.25 ug/mL) Western Blot The optimal working dilution should be determined by the end user.
Storage Buffer	In PBS (2% sucrose, 0.09% sodium azide).
Storage Instruction	Store at 4°C. For long term storage store at -20°C. Aliquot to avoid repeated freezing and thawing.
Note	This product contains sodium azide: a POISONOUS AND HAZARDOUS SUBSTANCE which should be handled by trained staff only.

Applications

- Western Blot (Tissue lysate)

Western Blot analysis of human fetal brain tissue lysate with NUP62 polyclonal antibody (Cat # PAB29933) at 0.2-1 ug/mL working concentration.

- Western Blot (Tissue lysate)

Western Blot analysis of human fetal lung tissue lysate with NUP62 polyclonal antibody (Cat # PAB29933) at 1 ug/mL working concentration.

- Immunofluorescence

Immunofluorescent staining of HeLa cells with NUP62 polyclonal antibody (Cat # PAB29933) at 0.25 ug/mL working concentration.

Gene Info — NUP62

Entrez GeneID	23636
GeneBank Accession#	NM_012346
Protein Accession#	NP_036478;P37198

Gene Name	NUP62
Gene Alias	DKFZp547L134, FLJ20822, FLJ43869, IBSN, MGC841, SNDI, p62
Gene Description	nucleoporin 62kDa
Omim ID	271930 605815
Gene Ontology	Hyperlink
Gene Summary	<p>The nuclear pore complex is a massive structure that extends across the nuclear envelope, forming a gateway that regulates the flow of macromolecules between the nucleus and the cytoplasm. Nucleoporins are the main components of the nuclear pore complex in eukaryotic cells. The protein encoded by this gene is a member of the FG-repeat containing nucleoporins and is localized to the nuclear pore central plug. This protein associates with the importin alpha/beta complex which is involved in the import of proteins containing nuclear localization signals. Multiple transcript variants of this gene encode a single protein isoform. [provided by RefSeq]</p>
Other Designations	nuclear pore glycoprotein p62