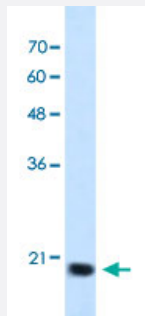


SSR2 polyclonal antibody

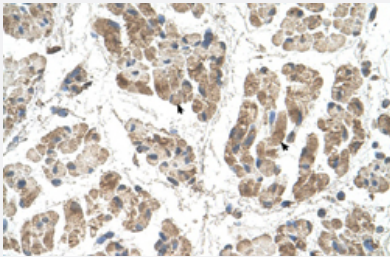
Catalog # PAB29932 Size 100 uL

Applications



Western Blot (Cell lysate)

Western Blot analysis of Jurkat cell lysate with SSR2 polyclonal antibody (Cat # PAB29932) at 1.25 ug/mL working concentration.



Immunohistochemistry (Formalin/PFA-fixed paraffin-embedded sections)

Immunohistochemical staining (Formalin-fixed paraffin-embedded sections) of human muscle with SSR2 polyclonal antibody (Cat # PAB29932) at 4-8 ug/mL working concentration.

Specification

Product Description	Rabbit polyclonal antibody raised against synthetic peptide of human SSR2.
Immunogen	A synthetic peptide corresponding to N-terminus of human SSR2.
Sequence	SFVVLALFAVTQAEEGARLLASKSLLNRYAVEGRDLTLQYNINVGSSAA
Host	Rabbit
Theoretical MW (kDa)	20
Reactivity	Human
Form	Liquid

Purification	Protein A purification
Recommend Usage	Immunohistochemistry (Formalin/PFA-fixed paraffin-embedded sections) (4-8 ug/mL) Western Blot (1.25 ug/mL) The optimal working dilution should be determined by the end user.
Storage Buffer	In PBS (2% sucrose, 0.09% sodium azide).
Storage Instruction	Store at 4°C. For long term storage store at -20°C. Aliquot to avoid repeated freezing and thawing.
Note	This product contains sodium azide: a POISONOUS AND HAZARDOUS SUBSTANCE which should be handled by trained staff only.

Applications

- Western Blot (Cell lysate)

Western Blot analysis of Jurkat cell lysate with SSR2 polyclonal antibody (Cat # PAB29932) at 1.25 ug/mL working concentration.

- Immunohistochemistry (Formalin/PFA-fixed paraffin-embedded sections)

Immunohistochemical staining (Formalin-fixed paraffin-embedded sections) of human muscle with SSR2 polyclonal antibody (Cat # PAB29932) at 4-8 ug/mL working concentration.

Gene Info — SSR2

Entrez GeneID	6746
GeneBank Accession#	NM_003145
Protein Accession#	NP_003136:P43308
Gene Name	SSR2
Gene Alias	DKFZp686F19123, HSD25, TLAP, TRAP-BETA, TRAPB
Gene Description	signal sequence receptor, beta (translocon-associated protein beta)
Omim ID	600867
Gene Ontology	Hyperlink

Gene Summary

The signal sequence receptor (SSR) is a glycosylated endoplasmic reticulum (ER) membrane receptor associated with protein translocation across the ER membrane. The SSR consists of 2 subunits, a 34-kD glycoprotein (alpha-SSR or SSR1) and a 22-kD glycoprotein (beta-SSR or SSR2). The human beta-signal sequence receptor gene (SSR2) maps to chromosome bands 1q21-q23. [provided by RefSeq]

Other Designations

signal sequence receptor, beta|translocon-associated protein beta

Disease

- [Tobacco Use Disorder](#)