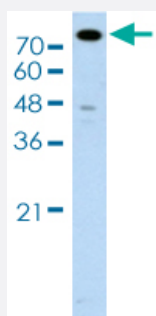


MCM3 polyclonal antibody

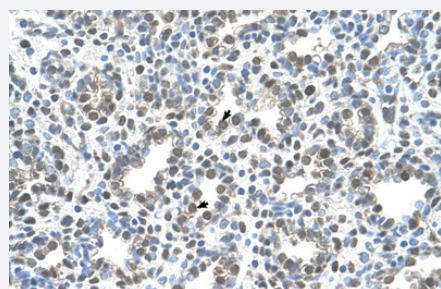
Catalog # PAB29920 Size 100 uL

Applications



Western Blot (Cell lysate)

Western blot analysis of Jurkat cell lysate with MCM3 polyclonal antibody (Cat # PAB29920).



Immunohistochemistry (Formalin/PFA-fixed paraffin-embedded sections)

Immunohistochemical staining (Formalin-fixed paraffin-embedded sections) of human lung with MCM3 polyclonal antibody (Cat # PAB29920).

Specification

Product Description	Rabbit polyclonal antibody raised against partial synthetic protein of human MCM3.
Immunogen	A synthetic peptide corresponding to amino acids 726-775 of human MCM3.
Sequence	SQEDQEQKRKRKTRQPDAGDSYDPYDFSDTEEMPQVHTPKTADSQE
Host	Rabbit
Theoretical MW (kDa)	89
Reactivity	Human
Form	Liquid

Purification	Affinity purification
Isotype	IgG
Recommend Usage	Immunohistochemistry (1:250) Western Blot (1:1000) The optimal working dilution should be determined by the end user.
Storage Buffer	In 1X PBS , pH 7.4 (2% sucrose, 0.09% sodium azide).
Storage Instruction	Store at 4°C for up to one week. For long term storage store at -20°C. Aliquot to avoid repeated freezing and thawing.
Note	This product contains sodium azide: a POISONOUS AND HAZARDOUS SUBSTANCE which should be handled by trained staff only.

Applications

- Western Blot (Cell lysate)

Western blot analysis of Jurkat cell lysate with MCM3 polyclonal antibody (Cat # PAB29920).

- Immunohistochemistry (Formalin/PFA-fixed paraffin-embedded sections)

Immunohistochemical staining (Formalin-fixed paraffin-embedded sections) of human lung with MCM3 polyclonal antibody (Cat # PAB29920).

Gene Info — MCM3

Entrez GeneID	4172
Protein Accession#	P25205
Gene Name	MCM3
Gene Alias	HCC5, MGC1157, P1-MCM3, P1.h, RLFB
Gene Description	minichromosome maintenance complex component 3
Omim ID	602693
Gene Ontology	Hyperlink

Gene Summary

The protein encoded by this gene is one of the highly conserved mini-chromosome maintenance proteins (MCM) that are involved in the initiation of eukaryotic genome replication. The hexameric protein complex formed by MCM proteins is a key component of the pre-replication complex (pre-RC) and may be involved in the formation of replication forks and in the recruitment of other DNA replication related proteins. This protein is a subunit of the protein complex that consists of MCM2-7. It has been shown to interact directly with MCM5/CDC46. This protein also interacts with, and thus is acetylated by MCM3AP, a chromatin-associated acetyltransferase. The acetylation of this protein inhibits the initiation of DNA replication and cell cycle progression. [provided by RefSeq]

Other Designations

DNA polymerase alpha holoenzyme-associated protein P1|DNA replication factor MCM3|MCM3 minichromosome maintenance deficient 3|OTTHUMP00000016600|cervical cancer proto-oncogene 5|hRlf beta subunit|minichromosome maintenance deficient 3|replication licensin

Pathway

- [Cell cycle](#)
- [DNA replication](#)