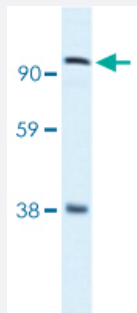


# MECOM polyclonal antibody

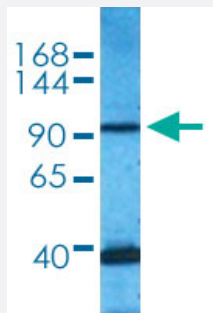
Catalog # PAB29908      Size 100 uL

## Applications



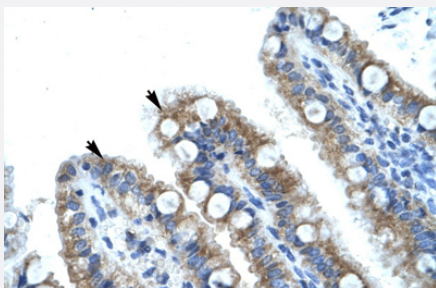
### Western Blot (Tissue lysate)

Western blot analysis of human fetal lung tissue lysate with MECOM polyclonal antibody (Cat # PAB29908).



### Western Blot (Cell lysate)

Western blot analysis of 293T cell lysate with MECOM polyclonal antibody (Cat # PAB29908).



### Immunohistochemistry (Formalin/PFA-fixed paraffin-embedded sections)

Immunohistochemical staining (Formalin-fixed paraffin-embedded sections) of human intestine with MECOM polyclonal antibody (Cat # PAB29908).

## Specification

### Product Description

Rabbit polyclonal antibody raised against partial synthetic protein of human MECOM.

### Immunogen

A synthetic peptide corresponding to amino acids 964-1013 of human MECOM.

Sequence	HFTDSLKMRKMEDNQYSEAEISSFSTSHVPEELKQPLHRKSKSQAYAMML
Host	Rabbit
Theoretical MW (kDa)	118
Reactivity	Human
Form	Liquid
Purification	Affinity purification
Isotype	IgG
Recommend Usage	Immunohistochemistry (1:250) Western Blot (1:1000) The optimal working dilution should be determined by the end user.
Storage Buffer	In 1X PBS , pH 7.4 (2% sucrose, 0.09% sodium azide).
Storage Instruction	Store at 4°C for up to one week. For long term storage store at -20°C. Aliquot to avoid repeated freezing and thawing.
Note	This product contains sodium azide: a POISONOUS AND HAZARDOUS SUBSTANCE which should be handled by trained staff only.

## Applications

- Western Blot (Tissue lysate)

Western blot analysis of human fetal lung tissue lysate with MECOM polyclonal antibody (Cat # PAB29908).

- Western Blot (Cell lysate)

Western blot analysis of 293T cell lysate with MECOM polyclonal antibody (Cat # PAB29908).

- Immunohistochemistry (Formalin/PFA-fixed paraffin-embedded sections)

Immunohistochemical staining (Formalin-fixed paraffin-embedded sections) of human intestine with MECOM polyclonal antibody (Cat # PAB29908).

## Gene Info — MECOM

Entrez GeneID	<a href="#">2122</a>
Protein Accession#	<a href="#">Q03112</a>
Gene Name	MECOM

Gene Alias	EVI1, MDS1, PRDM3, MDS1-EVI1, AML1-EVI-1
Gene Description	MDS1 and EVI1 complex locus
Omim ID	<a href="#">165215</a>
Gene Ontology	<a href="#">Hyperlink</a>
Other Designations	AML1-EVI-1 fusion protein oncogene EVI1

## Pathway

- [Chronic myeloid leukemia](#)
- [MAPK signaling pathway](#)
- [Pathways in cancer](#)

## Disease

- [Cleft Lip](#)
- [Cleft Palate](#)
- [Tobacco Use Disorder](#)