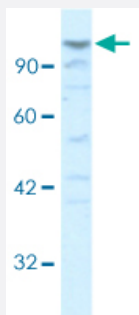


LARP1 polyclonal antibody

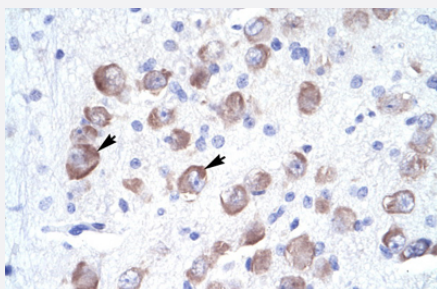
Catalog # PAB29903 Size 100 uL

Applications



Western Blot (Cell lysate)

Western blot analysis of HepG2 cell lysate with LARP1 polyclonal antibody (Cat # PAB29903).



Immunohistochemistry (Formalin/PFA-fixed paraffin-embedded sections)

Immunohistochemical staining (Formalin-fixed paraffin-embedded sections) of human brain with LARP1 polyclonal antibody (Cat # PAB29903).

Specification

Product Description	Rabbit polyclonal antibody raised against partial synthetic protein of human LARP1.
Immunogen	A synthetic peptide corresponding to amino acids 701-750 of human LARP1.
Sequence	RNTRTPRTPRTPQLKDSSQTSRFYPVVKEGRTLDAKMPRKTRHSSNPP
Host	Rabbit
Theoretical MW (kDa)	116
Reactivity	Human
Form	Liquid

Purification	Protein A purification
Isotype	IgG
Recommend Usage	Immunohistochemistry (1:250) Western Blot (1:1000) The optimal working dilution should be determined by the end user.
Storage Buffer	In 1X PBS , pH 7.4 (2% sucrose, 0.09% sodium azide).
Storage Instruction	Store at 4°C for up to one week. For long term storage store at -20°C. Aliquot to avoid repeated freezing and thawing.
Note	This product contains sodium azide: a POISONOUS AND HAZARDOUS SUBSTANCE which should be handled by trained staff only.

Applications

- Western Blot (Cell lysate)

Western blot analysis of HepG2 cell lysate with LARP1 polyclonal antibody (Cat # PAB29903).

- Immunohistochemistry (Formalin/PFA-fixed paraffin-embedded sections)

Immunohistochemical staining (Formalin-fixed paraffin-embedded sections) of human brain with LARP1 polyclonal antibody (Cat # PAB29903).

Gene Info — LARP1

Entrez GeneID	23367
Protein Accession#	Q6PKG0
Gene Name	LARP1
Gene Alias	KIAA0731, LARP, MGC19556
Gene Description	La ribonucleoprotein domain family, member 1
Gene Ontology	Hyperlink
Gene Summary	O
Other Designations	la related protein