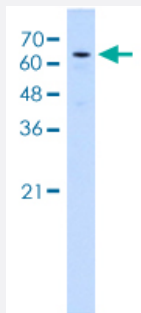


KRT2 polyclonal antibody

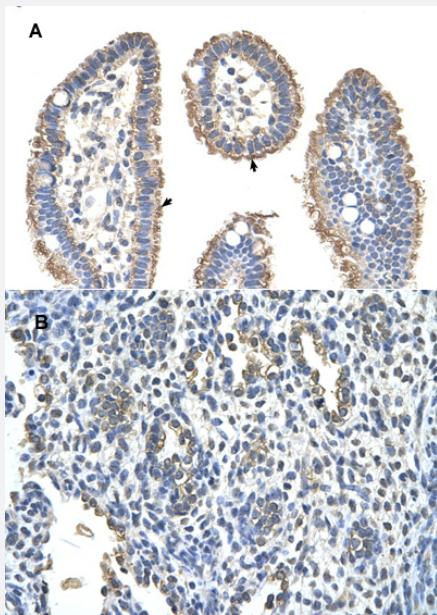
Catalog # PAB29900 Size 100 uL

Applications



Western Blot (Cell lysate)

Western blot analysis of Jurkat cell lysate with KRT2 polyclonal antibody (Cat # PAB29900).



Immunohistochemistry (Formalin/PFA-fixed paraffin-embedded sections)

Immunohistochemical staining (Formalin-fixed paraffin-embedded sections) of (A) human intestine and (B) human lung tissues with KRT2 polyclonal antibody (Cat # PAB29900).

Specification

Product Description	Rabbit polyclonal antibody raised against partial synthetic protein of human KRT2.
Immunogen	A synthetic peptide corresponding to amino acids 351-400 of human KRT2.
Sequence	EVKAQYEEIAQRSKEEAEALYHSKYEELQVTVGRHGDSLKEIKIEISELN

Host	Rabbit
Theoretical MW (kDa)	70
Reactivity	Human
Form	Liquid
Purification	Affinity purification
Isotype	IgG
Recommend Usage	Immunohistochemistry (1:250) Western Blot (1:1000) The optimal working dilution should be determined by the end user.
Storage Buffer	In 1X PBS , pH 7.4 (2% sucrose, 0.09% sodium azide).
Storage Instruction	Store at 4°C for up to one week. For long term storage store at -20°C. Aliquot to avoid repeated freezing and thawing.
Note	This product contains sodium azide: a POISONOUS AND HAZARDOUS SUBSTANCE which should be handled by trained staff only.

Applications

- Western Blot (Cell lysate)

Western blot analysis of Jurkat cell lysate with KRT2 polyclonal antibody (Cat # PAB29900).

- Immunohistochemistry (Formalin/PFA-fixed paraffin-embedded sections)

Immunohistochemical staining (Formalin-fixed paraffin-embedded sections) of (A) human intestine and (B) human lung tissues with KRT2 polyclonal antibody (Cat # PAB29900).

Gene Info — KRT2

Entrez GeneID	3849
Protein Accession#	P35908
Gene Name	KRT2
Gene Alias	KRT2A, KRT2E, KRTE, MGC116967, MGC116968
Gene Description	keratin 2
Omim ID	146800 600194

Gene Ontology[Hyperlink](#)**Gene Summary**

The protein encoded by this gene is a member of the keratin gene family. The type II cytokeratins consist of basic or neutral proteins which are arranged in pairs of heterotypic keratin chains coexpressed during differentiation of simple and stratified epithelial tissues. This type II cytokeratin is expressed largely in the upper spinous layer of epidermal keratinocytes and mutations in this gene have been associated with bullous congenital ichthyosiform erythroderma. The type II cytokeratins are clustered in a region of chromosome 12q12-q13. [provided by RefSeq]

Other Designations

epidermal ichthyosis bullosa of Siemens