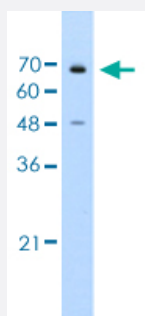


# KLHL25 polyclonal antibody

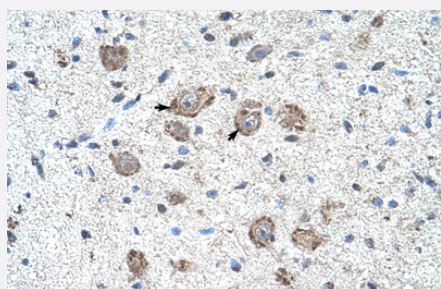
Catalog # PAB29895      Size 100 uL

## Applications



### Western Blot (Cell lysate)

Western blot analysis of Jurkat cell lysate with KLHL25 polyclonal antibody (Cat # PAB29895).



### Immunohistochemistry (Formalin/PFA-fixed paraffin-embedded sections)

Immunohistochemical staining (Formalin-fixed paraffin-embedded sections) of human brain with KLHL25 polyclonal antibody (Cat # PAB29895).

## Specification

<b>Product Description</b>	Rabbit polyclonal antibody raised against partial synthetic protein of human KLHL25.
<b>Immunogen</b>	A synthetic peptide corresponding to amino acids 163-212 of human KLHL25.
<b>Sequence</b>	RLYEFSSWRMCLVHFETVRQSEDFNSLSKDTLLDLISSDELETEDEDERVVFE
<b>Host</b>	Rabbit
<b>Theoretical MW (kDa)</b>	66
<b>Reactivity</b>	Human
<b>Form</b>	Liquid

Purification	Protein A purification
Isotype	IgG
Recommend Usage	Immunohistochemistry (1:250) Western Blot (1:1000) The optimal working dilution should be determined by the end user.
Storage Buffer	In 1X PBS , pH 7.4 (2% sucrose, 0.09% sodium azide).
Storage Instruction	Store at 4°C for up to one week. For long term storage store at -20°C. Aliquot to avoid repeated freezing and thawing.
Note	This product contains sodium azide: a POISONOUS AND HAZARDOUS SUBSTANCE which should be handled by trained staff only.

## Applications

- Western Blot (Cell lysate)

Western blot analysis of Jurkat cell lysate with KLHL25 polyclonal antibody (Cat # PAB29895).

- Immunohistochemistry (Formalin/PFA-fixed paraffin-embedded sections)

Immunohistochemical staining (Formalin-fixed paraffin-embedded sections) of human brain with KLHL25 polyclonal antibody (Cat # PAB29895).

## Gene Info — KLHL25

Entrez GeneID	<a href="#">64410</a>
Protein Accession#	<a href="#">Q9H0H3</a>
Gene Name	KLHL25
Gene Alias	ENC-2, ENC2, FLJ12587, FLJ45015
Gene Description	kelch-like 25 (Drosophila)
Gene Ontology	<a href="#">Hyperlink</a>
Other Designations	BTB/POZ KELCH domain protein ectodermal-neural cortex 2