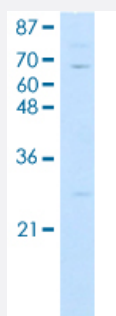


KLHL13 polyclonal antibody

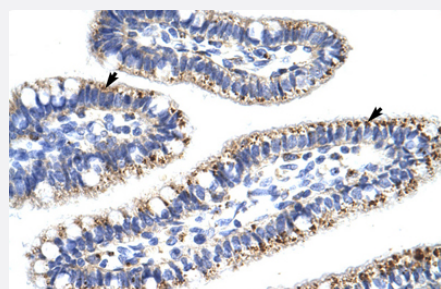
Catalog # PAB29894 Size 100 uL

Applications



Western Blot (Cell lysate)

Western blot analysis of Jurkat cell lysate with KLHL13 polyclonal antibody (Cat # PAB29894).



Immunohistochemistry (Formalin/PFA-fixed paraffin-embedded sections)

Immunohistochemical staining (Formalin-fixed paraffin-embedded sections) of human intestine with KLHL13 polyclonal antibody (Cat # PAB29894).

Specification

Product Description	Rabbit polyclonal antibody raised against partial synthetic protein of human KLHL13.
Immunogen	A synthetic peptide corresponding to amino acids 6-55 of human KLHL13.
Sequence	KTSSPAIWKFVPVLKTSRSTPLSPAYISLVEEEDQHMKLSLGGSEMGLS
Host	Rabbit
Theoretical MW (kDa)	74
Reactivity	Human
Form	Liquid

Purification	Affinity purification
Isotype	IgG
Recommend Usage	Immunohistochemistry (1:250) Western Blot (1:1000) The optimal working dilution should be determined by the end user.
Storage Buffer	In 1X PBS , pH 7.4 (2% sucrose, 0.09% sodium azide).
Storage Instruction	Store at 4°C for up to one week. For long term storage store at -20°C. Aliquot to avoid repeated freezing and thawing.
Note	This product contains sodium azide: a POISONOUS AND HAZARDOUS SUBSTANCE which should be handled by trained staff only.

Applications

- Western Blot (Cell lysate)

Western blot analysis of Jurkat cell lysate with KLHL13 polyclonal antibody (Cat # PAB29894).

- Immunohistochemistry (Formalin/PFA-fixed paraffin-embedded sections)

Immunohistochemical staining (Formalin-fixed paraffin-embedded sections) of human intestine with KLHL13 polyclonal antibody (Cat # PAB29894).

Gene Info — KLHL13

Entrez GeneID	90293
Protein Accession#	Q9P2N7
Gene Name	KLHL13
Gene Alias	BKLHD2, FLJ10262, KIAA1309, MGC74791
Gene Description	kelch-like 13 (Drosophila)
Omim ID	300655
Gene Ontology	Hyperlink
Other Designations	BTB and kelch domain containing 2 kelch-like 13

Pathway

- [Ubiquitin mediated proteolysis](#)