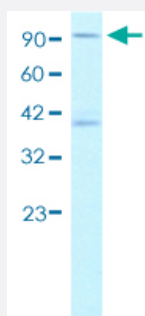


# KIFC2 polyclonal antibody

Catalog # PAB29890

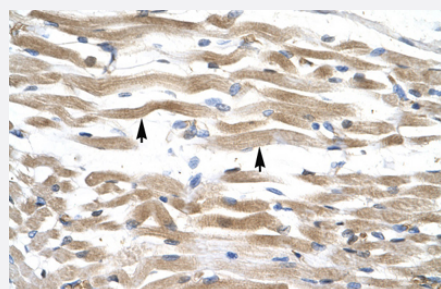
Size 100 uL

## Applications



### Western Blot (Cell lysate)

Western blot analysis of Jurkat cell lysate with KIFC2 polyclonal antibody (Cat # PAB29890).



### Immunohistochemistry (Formalin/PFA-fixed paraffin-embedded sections)

Immunohistochemical staining (Formalin-fixed paraffin-embedded sections) of human muscle with KIFC2 polyclonal antibody (Cat # PAB29890).

## Specification

Product Description	Rabbit polyclonal antibody raised against partial synthetic protein of human KIFC2.
Immunogen	A synthetic peptide corresponding to amino acids 150-199 of human KIFC2.
Sequence	VRPPSPDGSTSQEESPSHFTAVPGEPLGDETQGGQPLQLEEDQRAWQRLE
Host	Rabbit
Theoretical MW (kDa)	90
Reactivity	Human
Form	Liquid

Purification	Protein A purification
Isotype	IgG
Recommend Usage	Immunohistochemistry (1:250) Western Blot (1:1000) The optimal working dilution should be determined by the end user.
Storage Buffer	In 1X PBS , pH 7.4 (2% sucrose, 0.09% sodium azide).
Storage Instruction	Store at 4°C for up to one week. For long term storage store at -20°C. Aliquot to avoid repeated freezing and thawing.
Note	This product contains sodium azide: a POISONOUS AND HAZARDOUS SUBSTANCE which should be handled by trained staff only.

## Applications

- Western Blot (Cell lysate)

Western blot analysis of Jurkat cell lysate with KIFC2 polyclonal antibody (Cat # PAB29890).

- Immunohistochemistry (Formalin/PFA-fixed paraffin-embedded sections)

Immunohistochemical staining (Formalin-fixed paraffin-embedded sections) of human muscle with KIFC2 polyclonal antibody (Cat # PAB29890).

## Gene Info — KIFC2

Entrez GeneID	<a href="#">90990</a>
Protein Accession#	<a href="#">Q96AC6</a>
Gene Name	KIFC2
Gene Alias	-
Gene Description	kinesin family member C2
Gene Ontology	<a href="#">Hyperlink</a>
Other Designations	-