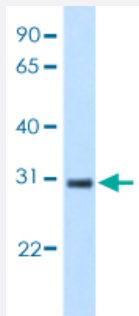


KCTD6 polyclonal antibody

Catalog # PAB29888

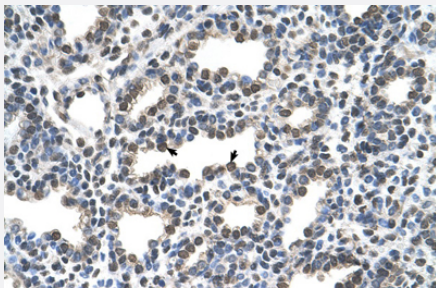
Size 100 uL

Applications



Western Blot (Transfected lysate)

Western blot analysis of KCTD6 transfected 293T cell lysate with KCTD6 polyclonal antibody (Cat # PAB29888).



Immunohistochemistry (Formalin/PFA-fixed paraffin-embedded sections)

Immunohistochemical staining (Formalin-fixed paraffin-embedded sections) of human lung with KCTD6 polyclonal antibody (Cat # PAB29888).

Specification

Product Description	Rabbit polyclonal antibody raised against partial synthetic protein of human KCTD6.
Immunogen	A synthetic peptide corresponding to amino acids 32-70 of human KCTD6.
Sequence	HL YTTSL TTL TRYPDSMLGAMFGGDFPTTRDPQGN YFINRDGPLFRYVLN
Host	Rabbit
Theoretical MW (kDa)	28
Reactivity	Human
Form	Liquid

Purification	Protein A purification
Isotype	IgG
Recommend Usage	Immunohistochemistry (1:250) Western Blot (1:1000) The optimal working dilution should be determined by the end user.
Storage Buffer	In 1X PBS , pH 7.4 (2% sucrose, 0.09% sodium azide).
Storage Instruction	Store at 4°C for up to one week. For long term storage store at -20°C. Aliquot to avoid repeated freezing and thawing.
Note	This product contains sodium azide: a POISONOUS AND HAZARDOUS SUBSTANCE which should be handled by trained staff only.

Applications

- Western Blot (Transfected lysate)

Western blot analysis of KCTD6 transfected 293T cell lysate with KCTD6 polyclonal antibody (Cat # PAB29888).

- Immunohistochemistry (Formalin/PFA-fixed paraffin-embedded sections)

Immunohistochemical staining (Formalin-fixed paraffin-embedded sections) of human lung with KCTD6 polyclonal antibody (Cat # PAB29888).

Gene Info — KCTD6

Entrez GeneID	200845
Protein Accession#	Q8NC69
Gene Name	KCTD6
Gene Alias	MGC27385
Gene Description	potassium channel tetramerisation domain containing 6
Gene Ontology	Hyperlink
Other Designations	-