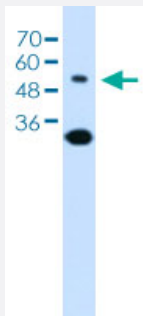


SLC2A5 polyclonal antibody

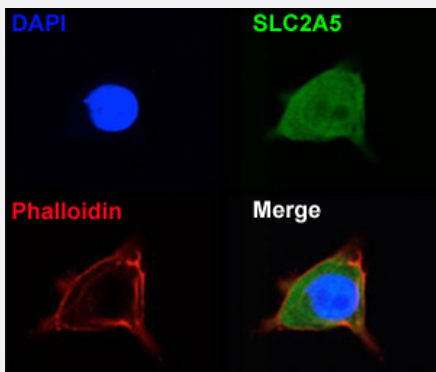
Catalog # PAB29883 Size 100 uL

Applications



Western Blot (Cell lysate)

Western blot analysis of Jurkat cell lysate with SLC2A5 polyclonal antibody (Cat # PAB29883).



Immunofluorescence

Immunofluorescent staining of mouse HEI-OC1 cell with SLC2A5 polyclonal antibody (Cat # PAB29883).

Specification

Product Description	Rabbit polyclonal antibody raised against partial synthetic protein of human SLC2A5.
Immunogen	A synthetic peptide corresponding to amino acids 300-349 of human SLC2A5.
Sequence	ADQMLSAGVPEEHVQYVTAGTGAVNVVMTFCVVFVVELLGRLLLLLGF
Host	Rabbit
Theoretical MW (kDa)	55
Reactivity	Human, Mouse

Form	Liquid
Purification	Affinity purification
Isotype	IgG
Recommend Usage	Immunofluorescence (1:100) Western Blot (1:1000) The optimal working dilution should be determined by the end user.
Storage Buffer	In PBS, pH 7.4 (2% sucrose, 0.09% sodium azide).
Storage Instruction	Store at 4°C for up to 1 week. For long term storage store at -20°C. Aliquot to avoid repeated freezing and thawing.
Note	This product contains sodium azide: a POISONOUS AND HAZARDOUS SUBSTANCE which should be handled by trained staff only.

Applications

- Western Blot (Cell lysate)

Western blot analysis of Jurkat cell lysate with SLC2A5 polyclonal antibody (Cat # PAB29883).

- Immunofluorescence

Immunofluorescent staining of mouse HEI-OC1 cell with SLC2A5 polyclonal antibody (Cat # PAB29883).

Gene Info — SLC2A5

Entrez GeneID	6518
Protein Accession#	P22732
Gene Name	SLC2A5
Gene Alias	GLUT5
Gene Description	solute carrier family 2 (facilitated glucose/fructose transporter), member 5
Omim ID	138230
Gene Ontology	Hyperlink
Gene Summary	O
Other Designations	OTTHUMP00000001704 glucose transporter-like protein 5 solute carrier family 2 (facilitated glucose transporter), member 5

Disease

- [Cardiovascular Diseases](#)
- [Diabetes Mellitus](#)
- [Edema](#)
- [Tobacco Use Disorder](#)