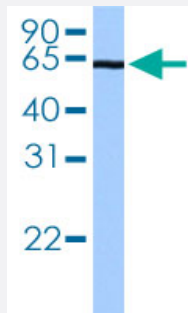


CSTF2T polyclonal antibody

Catalog # PAB29882 Size 100 uL

Applications

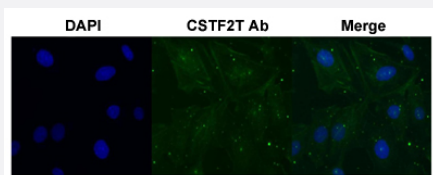


Western Blot (Tissue lysate)

Western blot analysis of human brain tissue lysate with CSTF2T polyclonal antibody (Cat # PAB29882).

Immunofluorescence

Immunofluorescent staining of SK-OV-3 cell with CSTF2T polyclonal antibody (Cat # PAB29882) under 4 ug/mL working concentration.



Specification

Product Description	Rabbit polyclonal antibody raised against partial synthetic protein of human CSTF2T.
Immunogen	A synthetic peptide corresponding to amino acids 460-509 of human CSTF2T.
Sequence	MRGPVPSSRGPM TGGIQQGPGPINIGAGGPPQGPRQVPGISGVGNPGAGMQ
Host	Rabbit
Theoretical MW (kDa)	64
Reactivity	Human
Form	Liquid

Purification	Affinity purification
Isotype	IgG
Recommend Usage	Immunofluorescence (1:250) Western Blot (1:1000) The optimal working dilution should be determined by the end user.
Storage Buffer	In PBS, pH 7.4 (2% sucrose, 0.09% sodium azide).
Storage Instruction	Store at 4°C for up to 1 week. For long term storage store at -20°C. Aliquot to avoid repeated freezing and thawing.
Note	This product contains sodium azide: a POISONOUS AND HAZARDOUS SUBSTANCE which should be handled by trained staff only.

Applications

- Western Blot (Tissue lysate)

Western blot analysis of human brain tissue lysate with CSTF2T polyclonal antibody (Cat # PAB29882).

- Immunofluorescence

Immunofluorescent staining of SK-OV-3 cell with CSTF2T polyclonal antibody (Cat # PAB29882) under 4 ug/mL working concentration.

Gene Info — CSTF2T

Entrez GeneID	23283
Protein Accession#	Q9H0L4
Gene Name	CSTF2T
Gene Alias	CstF-64T, DKFZp434C1013, KIAA0689
Gene Description	cleavage stimulation factor, 3' pre-RNA, subunit 2, 64kDa, tau variant
Gene Ontology	Hyperlink
Gene Summary	CSTF2T
Other Designations	OTTHUMP00000019616

Disease

- [Alzheimer Disease](#)
- [Genetic Predisposition to Disease](#)