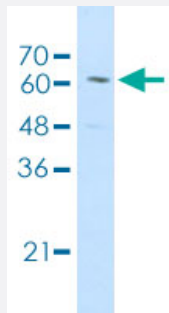


CPSF6 polyclonal antibody

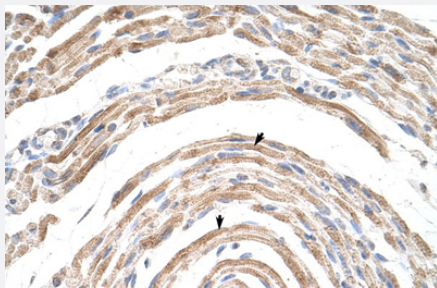
Catalog # PAB29880 Size 100 uL

Applications



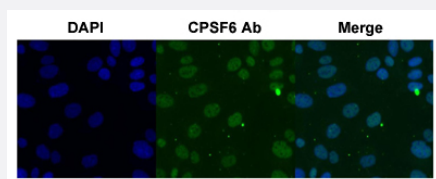
Western Blot (Cell lysate)

Western blot analysis of Jurkat cell lysate with CPSF6 polyclonal antibody (Cat # PAB29880).



Immunohistochemistry (Formalin/PFA-fixed paraffin-embedded sections)

Immunohistochemical staining (Formalin-fixed paraffin-embedded sections) of human muscle with CPSF6 polyclonal antibody (Cat # PAB29880).



Immunofluorescence

Immunofluorescent staining of SK-OV-3 cell with CPSF6 polyclonal antibody (Cat # PAB29880) under 4 ug/mL working concentration.

Specification

Product Description

Rabbit polyclonal antibody raised against partial synthetic protein of human CPSF6.

Immunogen

A synthetic peptide corresponding to amino acids 261-310 of human CPSF6.

Sequence	PPLAGPPNRGDRPPPPVLFPGQPFGQPPLGPLPPGPPPPVPGYGPPPGPP
Host	Rabbit
Theoretical MW (kDa)	61
Reactivity	Human
Form	Liquid
Purification	Protein A purification
Isotype	IgG
Recommend Usage	Immunofluorescence (1:250) Immunohistochemistry (1:250) Western Blot (1:1000) The optimal working dilution should be determined by the end user.
Storage Buffer	In PBS, pH 7.4 (2% sucrose, 0.09% sodium azide).
Storage Instruction	Store at 4°C for up to 1 week. For long term storage store at -20°C. Aliquot to avoid repeated freezing and thawing.
Note	This product contains sodium azide: a POISONOUS AND HAZARDOUS SUBSTANCE which should be handled by trained staff only.

Applications

- Western Blot (Cell lysate)

Western blot analysis of Jurkat cell lysate with CPSF6 polyclonal antibody (Cat # PAB29880).

- Immunohistochemistry (Formalin/PFA-fixed paraffin-embedded sections)

Immunohistochemical staining (Formalin-fixed paraffin-embedded sections) of human muscle with CPSF6 polyclonal antibody (Cat # PAB29880).

- Immunofluorescence

Immunofluorescent staining of SK-OV-3 cell with CPSF6 polyclonal antibody (Cat # PAB29880) under 4 ug/mL working concentration.

Gene Info — CPSF6

Entrez GeneID [11052](#)

Protein Accession# [Q16630](#)

Gene Name	CPSF6
Gene Alias	CFIM, CFIM68, HPBRIL-4, HPBRIL-7
Gene Description	cleavage and polyadenylation specific factor 6, 68kDa
Omim ID	604979
Gene Ontology	Hyperlink
Gene Summary	<p>The protein encoded by this gene is one subunit of a cleavage factor required for 3' RNA cleavage and polyadenylation processing. The interaction of the protein with the RNA is one of the earliest steps in the assembly of the 3' end processing complex and facilitates the recruitment of other processing factors. The cleavage factor complex is composed of four polypeptides. This gene encodes the 68kD subunit. It has a domain organization reminiscent of spliceosomal proteins. [provided by RefSeq]</p>
Other Designations	cleavage and polyadenylation specific factor 6, 68 kD subunit cleavage and polyadenylation specific factor 6, 68kD subunit pre-mRNA cleavage factor I, 68kD subunit pre-mRNA cleavage factor I m (68kD)