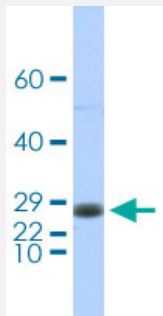


EDF1 polyclonal antibody

Catalog # PAB29874

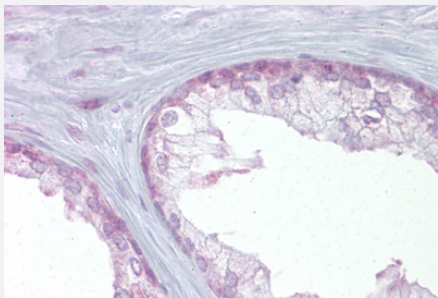
Size 100 uL

Applications



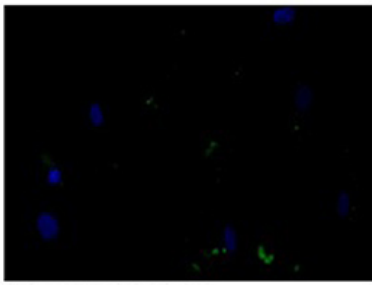
Western Blot (Tissue lysate)

Western blot analysis of human brain tissue lysate with EDF1 polyclonal antibody (Cat # PAB29874).

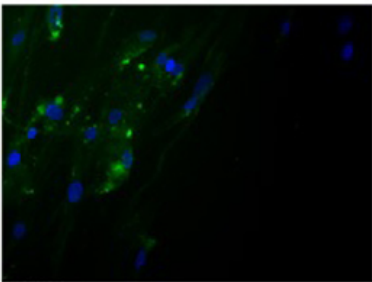


Immunohistochemistry (Formalin/PFA-fixed paraffin-embedded sections)

Immunohistochemical staining (Formalin-fixed paraffin-embedded sections) of human prostate with EDF1 polyclonal antibody (Cat # PAB29874).



Control: no antibody



EDF1

Immunofluorescence

Immunofluorescent staining of human fibroblast with EDF1 polyclonal antibody (Cat # PAB29874).

Specification

Product Description	Rabbit polyclonal antibody raised against partial synthetic protein of human EDF1.
Immunogen	A synthetic peptide corresponding to amino acids 99-148 of human EDF1.
Sequence	INEKPQVIADYESGRAIPNNQVLGKIERAIGLKLRGKDIGKPIEKGPRAK
Host	Rabbit
Theoretical MW (kDa)	16
Reactivity	Human
Form	Liquid
Purification	Affinity purification
Isotype	IgG
Recommend Usage	Immunofluorescence (1:250) Immunohistochemistry (1:250) Western Blot (1:1000) The optimal working dilution should be determined by the end user.
Storage Buffer	In PBS, pH 7.4 (2% sucrose, 0.09% sodium azide).

Storage Instruction

Store at 4°C for up to 1 week. For long term storage store at -20°C.
Aliquot to avoid repeated freezing and thawing.

Note

This product contains sodium azide: a POISONOUS AND HAZARDOUS SUBSTANCE which should be handled by trained staff only.

Applications

- Western Blot (Tissue lysate)

Western blot analysis of human brain tissue lysate with EDF1 polyclonal antibody (Cat # PAB29874).

- Immunohistochemistry (Formalin/PFA-fixed paraffin-embedded sections)

Immunohistochemical staining (Formalin-fixed paraffin-embedded sections) of human prostate with EDF1 polyclonal antibody (Cat # PAB29874).

- Immunofluorescence

Immunofluorescent staining of human fibroblast with EDF1 polyclonal antibody (Cat # PAB29874).

Gene Info — EDF1

Entrez GeneID[8721](#)**Protein Accession#**[O60869](#)**Gene Name**

EDF1

Gene Alias

EDF-1, MBF1, MGC9058

Gene Description

endothelial differentiation-related factor 1

Omim ID[605107](#)**Gene Ontology**[Hyperlink](#)**Gene Summary**

This gene encodes a protein that may regulate endothelial cell differentiation. It has been postulated that the protein functions as a bridging molecule that interconnects regulatory proteins and the basal transcriptional machinery, thereby modulating the transcription of genes involved in endothelial differentiation. This protein has also been found to act as a transcriptional coactivator by interconnecting the general transcription factor TATA element-binding protein (TBP) and gene-specific activators. Two alternatively spliced transcripts which encode distinct proteins have been found for this gene. [provided by RefSeq]

Other Designations

OTTHUMP00000022616|OTTHUMP00000022617|multiprotein bridging factor 1|multiprotein bridging factor-1