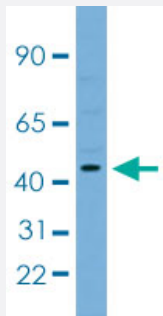


Atf4 polyclonal antibody

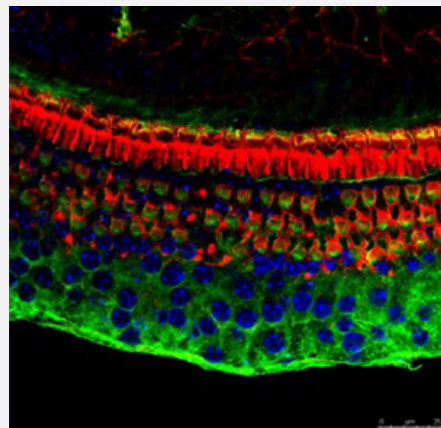
Catalog # PAB29873 Size 100 uL

Applications



Western Blot (Tissue lysate)

Western blot analysis of mouse brain tissue lysate with Atf4 polyclonal antibody (Cat # PAB29873).



Immunofluorescence

Immunofluorescent staining of mouse spiral organ with Atf4 polyclonal antibody (Cat # PAB29873).

Specification

Product Description	Rabbit polyclonal antibody raised against partial synthetic protein of mouse Atf4.
Immunogen	A synthetic peptide corresponding to amino acids 291-340 of mouse Atf4.
Sequence	TRYRQKKRAEQEALTGECKELEKKNEALKEKADSLAKEIQYLKDLIEEVR
Host	Rabbit
Theoretical MW (kDa)	38

Reactivity	Mouse
Form	Liquid
Purification	Affinity purification
Isotype	IgG
Recommend Usage	Immunofluorescence (1:100) Western Blot (1:1000) The optimal working dilution should be determined by the end user.
Storage Buffer	In PBS, pH 7.4 (2% sucrose, 0.09% sodium azide).
Storage Instruction	Store at 4°C for up to 1 week. For long term storage store at -20°C. Aliquot to avoid repeated freezing and thawing.
Note	This product contains sodium azide: a POISONOUS AND HAZARDOUS SUBSTANCE which should be handled by trained staff only.

Applications

- Western Blot (Tissue lysate)

Western blot analysis of mouse brain tissue lysate with Atf4 polyclonal antibody (Cat # PAB29873).

- Immunofluorescence

Immunofluorescent staining of mouse spiral organ with Atf4 polyclonal antibody (Cat # PAB29873).

Gene Info — Atf4

Entrez GeneID	11911
Protein Accession#	Q5U4B2
Gene Name	Atf4
Gene Alias	Atf-4, C/ATF, CREB2, MGC96460, TAXREB67
Gene Description	activating transcription factor 4
Gene Ontology	Hyperlink
Other Designations	-