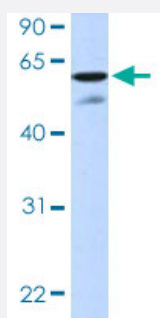


HIC2 polyclonal antibody

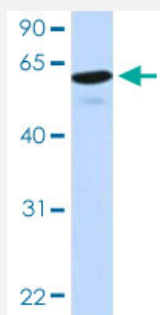
Catalog # PAB29865 Size 100 uL

Applications



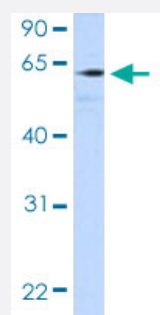
Western Blot (Tissue lysate)

Western blot analysis of human fetal muscle tissue lysate with HIC2 polyclonal antibody (Cat # PAB29865) under 1.0 ug/mL working concentration.



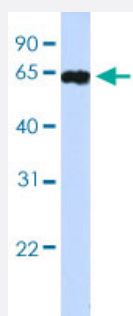
Western Blot (Tissue lysate)

Western blot analysis of human fetal liver tissue lysate with HIC2 polyclonal antibody (Cat # PAB29865) under 1.0 ug/mL working concentration.



Western Blot (Tissue lysate)

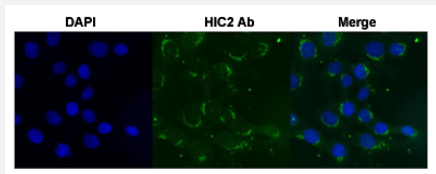
Western blot analysis of human adult placenta tissue lysate with HIC2 polyclonal antibody (Cat # PAB29865) under 1.0 ug/mL working concentration.



Western Blot (Cell lysate)

Western blot analysis of HEK 293T cell lysate with HIC2 polyclonal antibody (Cat # PAB29865).

Immunofluorescence



Immunofluorescent staining of Huh7 cell with HIC2 polyclonal antibody (Cat # PAB29865) under 4 ug/mL working concentration.

Specification

Product Description	Rabbit polyclonal antibody raised against partial synthetic protein of human HIC2.
Immunogen	A synthetic peptide corresponding to amino acids 395-444 of human HIC2.
Sequence	CKEEEEENGKDASEDSAQSGSEGSGHASAHMYRQEGYETVSYGDNLVVC
Host	Rabbit
Theoretical MW (kDa)	66
Reactivity	Human
Form	Liquid
Purification	Affinity purification
Isotype	IgG
Recommend Usage	Immunofluorescence (1:250) Western Blot (1:1000) The optimal working dilution should be determined by the end user.
Storage Buffer	In PBS, pH 7.4 (2% sucrose, 0.09% sodium azide).
Storage Instruction	Store at 4°C for up to 1 week. For long term storage store at -20°C. Aliquot to avoid repeated freezing and thawing.
Note	This product contains sodium azide: a POISONOUS AND HAZARDOUS SUBSTANCE which should be handled by trained staff only.

Applications

- Western Blot (Tissue lysate)

Western blot analysis of human fetal muscle tissue lysate with HIC2 polyclonal antibody (Cat # PAB29865) under 1.0 ug/mL working concentration.

- Western Blot (Tissue lysate)

Western blot analysis of human fetal liver tissue lysate with HIC2 polyclonal antibody (Cat # PAB29865) under 1.0 ug/mL working concentration.

- Western Blot (Tissue lysate)

Western blot analysis of human adult placenta tissue lysate with HIC2 polyclonal antibody (Cat # PAB29865) under 1.0 ug/mL working concentration.

- Western Blot (Cell lysate)

Western blot analysis of HEK 293T cell lysate with HIC2 polyclonal antibody (Cat # PAB29865).

- Immunofluorescence

Immunofluorescent staining of Huh7 cell with HIC2 polyclonal antibody (Cat # PAB29865) under 4 ug/mL working concentration.

Gene Info — HIC2

Entrez GeneID	23119
---------------	-----------------------

Protein Accession#	Q96JB3
--------------------	------------------------

Gene Name	HIC2
-----------	------

Gene Alias	HRG22, KIAA1020, ZBTB30
------------	-------------------------

Gene Description	hypermethylated in cancer 2
------------------	-----------------------------

Omim ID	607712
---------	------------------------

Gene Ontology	Hyperlink
---------------	---------------------------

Other Designations	HIC1-related
--------------------	--------------