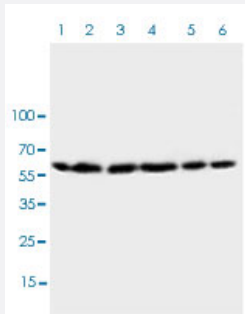


Hspd1 polyclonal antibody

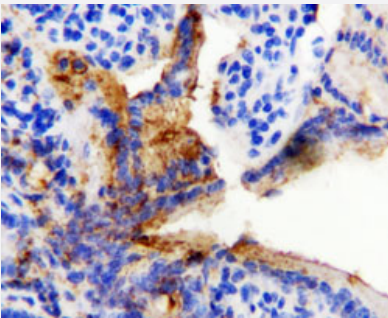
Catalog # PAB29783 Size 100 ug

Applications



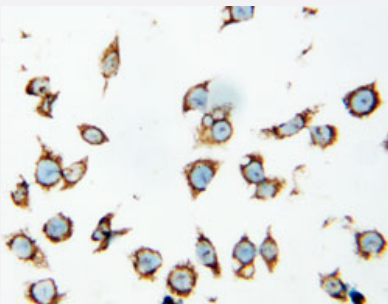
Western Blot

Western blot analysis of Lane 1: rat brain tissue lysate, Lane 2: rat liver tissue lysate, Lane 3: CEM cell lysate, Lane 4: HELA cell lysate, Lane 5: SMMC cell lysate, Lane 6: COLO320 cell lysate with Hspd1 polyclonal antibody (Cat# PAB29783) under 0.1-0.5 ug/mL working concentration.



Immunohistochemistry (Formalin/PFA-fixed paraffin-embedded sections)

Immunohistochemical staining of rat intestine tissue with Hspd1 polyclonal antibody (Cat# PAB29783) under 0.5-1 ug/mL working concentration.



Immunocytochemistry

Immunocytochemistry staining of SMMC cell with Hspd1 polyclonal antibody (Cat# PAB29783) under 0.5-1 ug/mL working concentration.

Specification

Product Description

Rabbit polyclonal antibody raised against partial synthetic peptide of rat Hspd1.

Immunogen

A synthetic peptide corresponding to amino acids 503-516 at C-terminus of rat Hspd1.

Sequence	YDAMLGDFVNMVEK
Host	Rabbit
Theoretical MW (kDa)	60
Reactivity	Human, Mouse, Rat
Specificity	The synthetic peptide of this antibody is different from the related human sequence by one amino acid.
Form	Lyophilized
Purification	Immunogen affinity purification
Isotype	IgG
Recommend Usage	Immunocytochemistry (0.5-1 ug/mL) Immunohistochemistry (0.5-1 ug/mL) Western Blot (0.1-0.5 ug/mL) The optimal working dilution should be determined by the end user.
Storage Buffer	Lyophilized from 5 mg BSA, 0.9 mg NaCl, 0.2 mg Na ₂ HPO ₄ , 0.05 mg Thimerosal, 0.05 mg sodium azide.
Storage Instruction	Store at -20°C. After reconstitution with 0.2 mL of distilled water and concentration will be 500 ug/mL, store at -20°C. Aliquot to avoid repeated freezing and thawing.
Note	This product contains sodium azide and thimerosal: POISONOUS AND HAZARDOUS SUBSTANCE which should be handled by trained staff only.

Applications

- Western Blot

Western blot analysis of Lane 1: rat brain tissue lysate, Lane 2: rat liver tissue lysate, Lane 3: CEM cell lysate, Lane 4: HELA cell lysate, Lane 5: SMMC cell lysate, Lane 6: COLO320 cell lysate with Hspd1 polyclonal antibody (Cat# PAB29783) under 0.1-0.5 ug/mL working concentration.

- Immunohistochemistry (Formalin/PFA-fixed paraffin-embedded sections)

Immunohistochemical staining of rat intestine tissue with Hspd1 polyclonal antibody (Cat# PAB29783) under 0.5-1 ug/mL working concentration.

- Immunocytochemistry

Immunocytochemistry staining of SMMC cell with Hspd1 polyclonal antibody (Cat# PAB29783) under 0.5-1 ug/mL working concentration.

Gene Info — Hspd1

Entrez GeneID	63868
---------------	-----------------------

Protein Accession#	P63039
--------------------	------------------------

Gene Name	Hspd1
-----------	-------

Gene Alias	Hsp60
------------	-------

Gene Description	heat shock protein 1 (chaperonin)
------------------	-----------------------------------

Gene Ontology	Hyperlink
---------------	---------------------------

Other Designations	heat shock 60kD protein 1 (chaperonin) heat shock protein 60 (liver)
--------------------	--