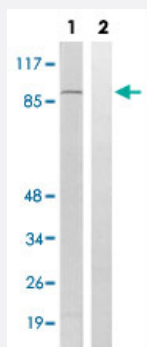


RPS6KA4 (phospho T568) polyclonal antibody

Catalog # PAB29649

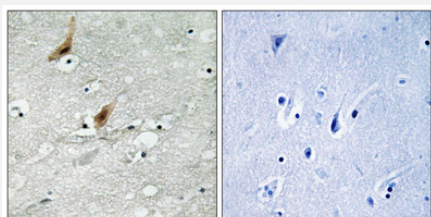
Size 100 uL

Applications



Western Blot (Cell lysate)

Western blot analysis of Lane 1: Untreated 293 cell lysates, Lane 2: Synthesized peptide treated 293 cell lysates reacted with RPS6KA4 (phospho T568) polyclonal antibody (Cat # PAB29649) at 1:500-1:3000 dilution.



Immunohistochemistry (Formalin/PFA-fixed paraffin-embedded sections)

Immunohistochemical staining of paraffin-embedded human brain tissue reacted with RPS6KA4 (phospho T568) polyclonal antibody (Cat # PAB29649) at 1:50-1:100 dilution. The picture on the right is treated with the synthesized peptide.

Specification

Product Description	Rabbit polyclonal antibody raised against synthetic phosphopeptide of human RPS6KA4.
Immunogen	Synthetic phosphopeptide (conjugated with KLH) corresponding to residues surrounding T568 of human RPS6KA4.
Host	Rabbit
Theoretical MW (kDa)	95
Reactivity	Human, Mouse

Specificity	RPS6KA4 (phospho T568) polyclonal antibody detects endogenous levels of human RPS6KA4 only when phosphorylated at threonine 568.
Form	Liquid
Purification	Affinity chromatography
Recommend Usage	Immunohistochemistry (1:50-1:100) Western Blot (1:500-1:3000) The optimal working dilution should be determined by the end user.
Storage Buffer	In PBS (without Mg^{2+} and Ca^{2+}), 150 mM NaCl, pH 7.4 (50% glycerol, 0.02% sodium azide)
Storage Instruction	Store at -20°C. Aliquot to avoid repeated freezing and thawing.
Note	This product contains sodium azide: a POISONOUS AND HAZARDOUS SUBSTANCE which should be handled by trained staff only.

Applications

- Western Blot (Cell lysate)

Western blot analysis of Lane 1: Untreated 293 cell lysates, Lane 2: Synthesized peptide treated 293 cell lysates reacted with RPS6KA4 (phospho T568) polyclonal antibody (Cat # PAB29649) at 1:500-1:3000 dilution.

- Immunohistochemistry (Formalin/PFA-fixed paraffin-embedded sections)

Immunohistochemical staining of paraffin-embedded human brain tissue reacted with RPS6KA4 (phospho T568) polyclonal antibody (Cat # PAB29649) at 1:50-1:100 dilution. The picture on the right is treated with the synthesized peptide.

Gene Info — RPS6KA4

Entrez GeneID	8986
Protein Accession#	O75676
Gene Name	RPS6KA4
Gene Alias	MSK2, RSK-B
Gene Description	ribosomal protein S6 kinase, 90kDa, polypeptide 4
Omim ID	603606
Gene Ontology	Hyperlink

Gene Summary

This gene encodes a member of the RSK (ribosomal S6 kinase) family of serine/threonine kinases. This kinase contains 2 non-identical kinase catalytic domains and phosphorylates various substrates, including CREB1 and c-fos. Alternate transcriptional splice variants of this gene have been observed but have not been thoroughly characterized. [provided by RefSeq]

Other Designations

mitogen- and stress-activated protein kinase 2|ribosomal protein S6 kinase alpha 4|ribosomal protein S6 kinase, 90kD, polypeptide 4|ribosomal protein kinase B

Pathway

- [MAPK signaling pathway](#)
- [Neurotrophin signaling pathway](#)