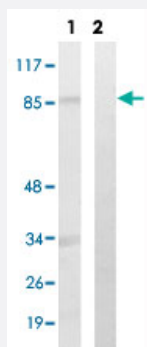


ATRIP (phospho S224) polyclonal antibody

Catalog # PAB29644

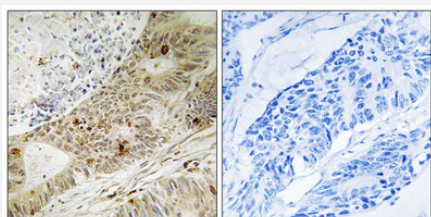
Size 100 uL

Applications



Western Blot (Cell lysate)

Western blot analysis of Lane 1: Untreated 293 cell lysates, Lane 2: Synthesized peptide treated 293 cell lysates reacted with ATRIP (phospho S224) polyclonal antibody (Cat # PAB29644) at 1:500-1:3000 dilution.



Immunohistochemistry (Formalin/PFA-fixed paraffin-embedded sections)

Immunohistochemical staining of paraffin-embedded human colon carcinoma tissue reacted with ATRIP (phospho S224) polyclonal antibody (Cat # PAB29644) at 1:50-1:100 dilution. The picture on the right is treated with the synthesized peptide.

Specification

Product Description	Rabbit polyclonal antibody raised against synthetic phosphopeptide of human ATRIP.
Immunogen	Synthetic phosphopeptide (conjugated with KLH) corresponding to residues surrounding S224 of human ATRIP.
Host	Rabbit
Theoretical MW (kDa)	86
Reactivity	Human

Specificity	ATRIP (phospho S224) polyclonal antibody detects endogenous levels of human ATRIP only when phosphorylated at serine 224.
Form	Liquid
Purification	Affinity chromatography
Recommend Usage	Immunohistochemistry (1:50-1:100) Western Blot (1:500-1:3000) The optimal working dilution should be determined by the end user.
Storage Buffer	In PBS (without Mg^{2+} and Ca^{2+}), 150 mM NaCl, pH 7.4 (50% glycerol, 0.02% sodium azide)
Storage Instruction	Store at -20°C. Aliquot to avoid repeated freezing and thawing.
Note	This product contains sodium azide: a POISONOUS AND HAZARDOUS SUBSTANCE which should be handled by trained staff only.

Applications

- Western Blot (Cell lysate)

Western blot analysis of Lane 1: Untreated 293 cell lysates, Lane 2: Synthesized peptide treated 293 cell lysates reacted with ATRIP (phospho S224) polyclonal antibody (Cat # PAB29644) at 1:500-1:3000 dilution.

- Immunohistochemistry (Formalin/PFA-fixed paraffin-embedded sections)

Immunohistochemical staining of paraffin-embedded human colon carcinoma tissue reacted with ATRIP (phospho S224) polyclonal antibody (Cat # PAB29644) at 1:50-1:100 dilution. The picture on the right is treated with the synthesized peptide.

Gene Info — ATRIP

Entrez GeneID	84126
Protein Accession#	Q8WXE1
Gene Name	ATRIP
Gene Alias	DKFZp762J2115, FLJ12343, MGC20625, MGC21482, MGC26740
Gene Description	ATR interacting protein
Omim ID	606605
Gene Ontology	Hyperlink

Gene Summary

The product of this gene is an essential component of the DNA damage checkpoint, and binds to single-stranded DNA coated with replication protein A that accumulates at sites of DNA damage. The encoded protein interacts with the ataxia telangiectasia and Rad3 related protein, a checkpoint kinase, resulting in accumulation of the kinase at intranuclear foci induced by DNA damage. Multiple transcript variants encoding different isoforms have been found for this gene. [provided by RefSeq]

Other Designations

-

Disease

- [Breast cancer](#)
- [Breast Neoplasms](#)
- [Cardiovascular Diseases](#)
- [Diabetes Mellitus](#)
- [Edema](#)
- [Genetic Predisposition to Disease](#)
- [Kidney Failure](#)