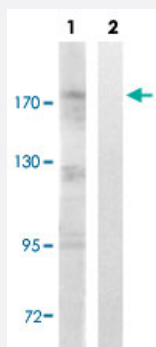


# TOP2A (phospho S1106) polyclonal antibody

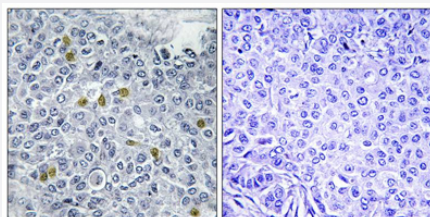
Catalog # PAB29634      Size 100 uL

## Applications



### Western Blot (Cell lysate)

Western blot analysis of Lane 1: Untreated Jurkat cell lysates, Lane 2: Synthesized peptide treated Jurkat cell lysates reacted with TOP2A (phospho S1106) polyclonal antibody (Cat # PAB29634) at 1:500-1:3000 dilution.



### Immunohistochemistry (Formalin/PFA-fixed paraffin-embedded sections)

Immunohistochemical staining of paraffin-embedded human breast carcinoma tissue reacted with TOP2A (phospho S1106) polyclonal antibody (Cat # PAB29634) at 1:50-1:100 dilution. The picture on the right is treated with the synthesized peptide.

## Specification

<b>Product Description</b>	Rabbit polyclonal antibody raised against synthetic phosphopeptide of human TOP2A.
<b>Immunogen</b>	Synthetic phosphopeptide (conjugated with KLH) corresponding to residues surrounding S1106 of human TOP2A.
<b>Host</b>	Rabbit
<b>Theoretical MW (kDa)</b>	174
<b>Reactivity</b>	Human, Mouse

Specificity	TOP2A (phospho S1106) polyclonal antibody detects endogenous levels of human TOP2A only when phosphorylated at serine 1106.
Form	Liquid
Purification	Affinity chromatography
Recommend Usage	Immunohistochemistry (1:50-1:100) Western Blot (1:500-1:3000) The optimal working dilution should be determined by the end user.
Storage Buffer	In PBS (without $Mg^{2+}$ and $Ca^{2+}$ ), 150 mM NaCl, pH 7.4 (50% glycerol, 0.02% sodium azide)
Storage Instruction	Store at -20°C. Aliquot to avoid repeated freezing and thawing.
Note	This product contains sodium azide: a POISONOUS AND HAZARDOUS SUBSTANCE which should be handled by trained staff only.

## Applications

- Western Blot (Cell lysate)

Western blot analysis of Lane 1: Untreated Jurkat cell lysates, Lane 2: Synthesized peptide treated Jurkat cell lysates reacted with TOP2A (phospho S1106) polyclonal antibody (Cat # PAB29634) at 1:500-1:3000 dilution.

- Immunohistochemistry (Formalin/PFA-fixed paraffin-embedded sections)

Immunohistochemical staining of paraffin-embedded human breast carcinoma tissue reacted with TOP2A (phospho S1106) polyclonal antibody (Cat # PAB29634) at 1:50-1:100 dilution. The picture on the right is treated with the synthesized peptide.

## Gene Info — TOP2A

Entrez GeneID	<a href="#">7153</a>
Protein Accession#	<a href="#">P11388</a>
Gene Name	TOP2A
Gene Alias	TOP2, TP2A
Gene Description	topoisomerase (DNA) II alpha 170kDa
Omim ID	<a href="#">126430</a>
Gene Ontology	<a href="#">Hyperlink</a>

**Gene Summary**

This gene encodes a DNA topoisomerase, an enzyme that controls and alters the topologic state of DNA during transcription. This nuclear enzyme is involved in processes such as chromosome condensation, chromatid separation, and the relief of torsional stress that occurs during DNA transcription and replication. It catalyzes the transient breaking and rejoining of two strands of duplex DNA which allows the strands to pass through one another, thus altering the topology of DNA. Two forms of this enzyme exist as likely products of a gene duplication event. The gene encoding this form, alpha, is localized to chromosome 17 and the beta gene is localized to chromosome 3. The gene encoding this enzyme functions as the target for several anticancer agents and a variety of mutations in this gene have been associated with the development of drug resistance. Reduced activity of this enzyme may also play a role in ataxia-telangiectasia. [provided by RefSeq]

**Other Designations**

DNA topoisomerase II, 170 kD|DNA topoisomerase II, alpha isozyme|topoisomerase (DNA) II alpha (170kD)

**Disease**

- [Breast cancer](#)
- [Breast Neoplasms](#)
- [Genetic Predisposition to Disease](#)
- [Leukemia](#)
- [Lymphatic Metastasis](#)
- [Lymphoma](#)
- [Recurrence](#)
- [Stomach Neoplasms](#)