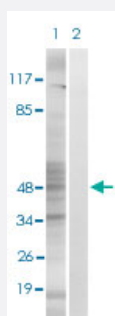


MAPKAPK2 (phospho S272) polyclonal antibody

Catalog # PAB29630

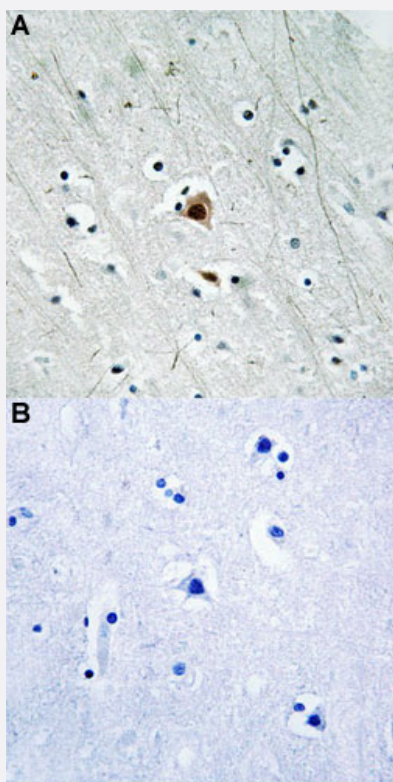
Size 100 uL

Applications



Western Blot (Cell lysate)

Western blot analysis of Lane 1: UV treated RAW264.7 cells, Lane 2: antigen-specific peptide treated RAW264.7 cells with MAPKAPK2 (phospho S272) polyclonal antibody (Cat# PAB29630) at 1:500-1:1000 dilution.



Immunohistochemistry (Formalin/PFA-fixed paraffin-embedded sections)

Immunohistochemical staining of human brain tissue by MAPKAPK2 (phospho S272) polyclonal antibody (Cat# PAB29630) without blocking peptide (A) or preincubated with blocking peptide (B) under 1:50-1:100 dilution.

Specification

Product Description

Rabbit polyclonal antibody raised against synthetic phosphopeptide of human MAPKAPK2.

Immunogen	A synthetic phosphopeptide (conjugated with KLH) corresponding to residues surrounding S272 of human MAPKAPK2.
Host	Rabbit
Theoretical MW (kDa)	45
Reactivity	Human, Mouse, Rabbit
Specificity	MAPKAPK2 (phospho S272) polyclonal antibody detects endogenous level of MAPKAPK2 only when phosphorylated at serine 272.
Form	Liquid
Purification	Affinity Chromatography
Recommend Usage	Immunohistochemistry (1:50-1:100) Western Blot (1:500-1:1000) The optimal working dilution should be determined by the end user.
Storage Buffer	In PBS (without Mg^{2+} and Ca^{2+}), 150 mM NaCl, pH 7.4 (50% glycerol, 0.02% sodium azide)
Storage Instruction	Store at -20°C. Aliquot to avoid repeated freezing and thawing.
Note	This product contains sodium azide: a POISONOUS AND HAZARDOUS SUBSTANCE which should be handled by trained staff only.

Applications

- Western Blot (Cell lysate)

Western blot analysis of Lane 1: UV treated RAW264.7 cells, Lane 2: antigen-specific peptide treated RAW264.7 cells with MAPKAPK2 (phospho S272) polyclonal antibody (Cat# PAB29630) at 1:500-1:1000 dilution.

- Immunohistochemistry (Formalin/PFA-fixed paraffin-embedded sections)

Immunohistochemical staining of human brain tissue by MAPKAPK2 (phospho S272) polyclonal antibody (Cat# PAB29630) without blocking peptide (A) or preincubated with blocking peptide (B) under 1:50-1:100 dilution.

Gene Info — MAPKAPK2

Entrez GeneID [9261](#)

Protein Accession# [P49137](#)

Gene Name MAPKAPK2

Gene Alias	MK2
Gene Description	mitogen-activated protein kinase-activated protein kinase 2
Omim ID	602006
Gene Ontology	Hyperlink
Gene Summary	<p>This gene encodes a member of the Ser/Thr protein kinase family. This kinase is regulated through direct phosphorylation by p38 MAP kinase. In conjunction with p38 MAP kinase, this kinase is known to be involved in many cellular processes including stress and inflammatory responses, nuclear export, gene expression regulation and cell proliferation. Heat shock protein HSP27 was shown to be one of the substrates of this kinase in vivo. Two transcript variants encoding two different isoforms have been found for this gene. [provided by RefSeq]</p>
Other Designations	OTTHUMP00000034531 OTTHUMP00000034532

Pathway

- [MAPK signaling pathway](#)
- [Neurotrophin signaling pathway](#)
- [VEGF signaling pathway](#)