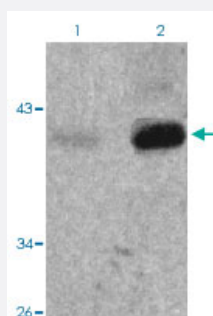


Nfkbie (phospho S22) polyclonal antibody

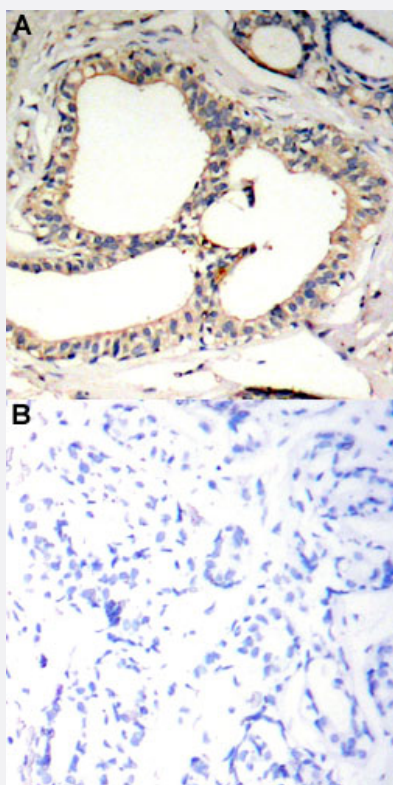
Catalog # PAB29617 Size 100 uL

Applications



Western Blot (Cell lysate)

Western blot analysis of Lane 1: 293 cells, Lane 2: TNF treated 293 cells with Nfkbie (phospho S22) polyclonal antibody (Cat# PAB29617) at 1:500-1:1000 dilution.



Immunohistochemistry (Formalin/PFA-fixed paraffin-embedded sections)

Immunohistochemical staining of human breast cancer tissue by Nfkbie (phospho S22) polyclonal antibody (Cat# PAB29617) without blocking peptide (A) or preincubated with blocking peptide (B) under 1:50-1:100 dilution.

Specification

Product Description

Rabbit polyclonal antibody raised against synthetic phosphopeptide of mouse Nfkbie.

Immunogen	A synthetic phosphopeptide (conjugated with KLH) corresponding to residues surrounding S22 of mouse Nfkbie.
Host	Rabbit
Theoretical MW (kDa)	40
Reactivity	Human, Mouse
Specificity	Nfkbie (phospho S22) polyclonal antibody detects endogenous level of Nfkbie only when phosphorylated at serine 22.
Form	Liquid
Purification	Affinity Chromatography
Recommend Usage	Immunohistochemistry (1:50-1:100) Western Blot (1:500-1:1000) The optimal working dilution should be determined by the end user.
Storage Buffer	In PBS (without Mg^{2+} and Ca^{2+}), 150 mM NaCl, pH 7.4 (50% glycerol, 0.02% sodium azide)
Storage Instruction	Store at 4°C. For long term storage store at -20°C. Aliquot to avoid repeated freezing and thawing.
Note	This product contains sodium azide: a POISONOUS AND HAZARDOUS SUBSTANCE which should be handled by trained staff only.

Applications

- Western Blot (Cell lysate)

Western blot analysis of Lane 1: 293 cells, Lane 2: TNF treated 293 cells with Nfkbie (phospho S22) polyclonal antibody (Cat# PAB29617) at 1:500-1:1000 dilution.

- Immunohistochemistry (Formalin/PFA-fixed paraffin-embedded sections)

Immunohistochemical staining of human breast cancer tissue by Nfkbie (phospho S22) polyclonal antibody (Cat# PAB29617) without blocking peptide (A) or preincubated with blocking peptide (B) under 1:50-1:100 dilution.

Gene Info — Nfkbie

Entrez GeneID [18037](#)

Protein Accession# [O00221](#)

Gene Name Nfkbie

Gene Alias	IKBE
Gene Description	nuclear factor of kappa light polypeptide gene enhancer in B-cells inhibitor, epsilon
Gene Ontology	Hyperlink
Gene Summary	O
Other Designations	-