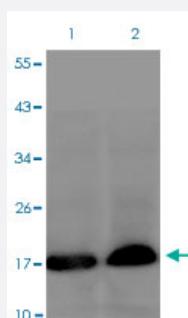


HIST1H3A (phospho S10) polyclonal antibody

Catalog # PAB29616

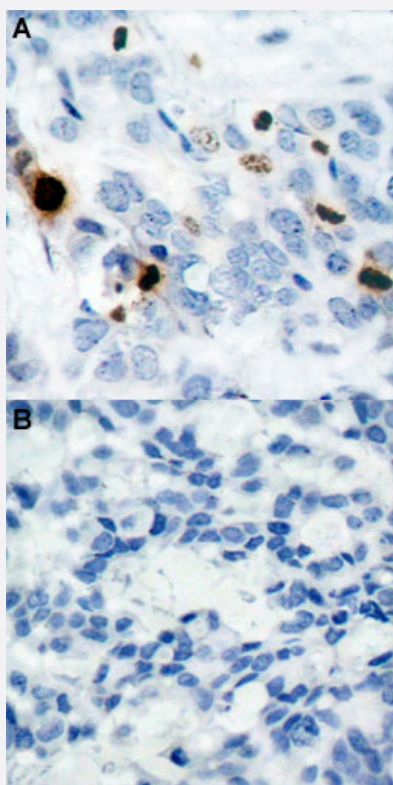
Size 100 uL

Applications



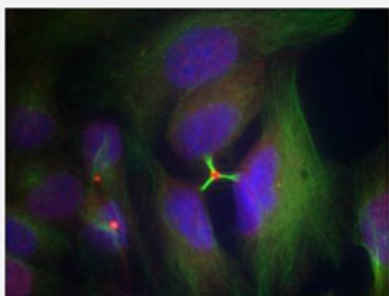
Western Blot (Cell lysate)

Western blot analysis of Lane 1: SK-BR-3 cells, Lane 2: Insulin and EGF treated SK-BR-3 cells with HIST1H3A (phospho S10) polyclonal antibody (Cat# PAB29616) at 1:500-1:1000 dilution.



Immunohistochemistry (Formalin/PFA-fixed paraffin-embedded sections)

Immunohistochemical staining of human breast cancer tissue by HIST1H3A (phospho S10) polyclonal antibody (Cat# PAB29616) without blocking peptide (A) or preincubated with blocking peptide (B) under 1:50-1:100 dilution.



Immunofluorescence

Immunofluorescent staining of methanol-fixed HeLa cells using HIST1H3A (phospho S10) polyclonal antibody (Cat# PAB29616) at 1:100-1:200 dilution.

Specification

Product Description	Rabbit polyclonal antibody raised against synthetic phosphopeptide of human HIST1H3A.
Immunogen	A synthetic phosphopeptide (conjugated with KLH) corresponding to residues surrounding S10 of human HIST1H3A.
Host	Rabbit
Theoretical MW (kDa)	17
Reactivity	Human, Mouse, Rabbit
Specificity	HIST1H3A (phospho S10) polyclonal antibody detects endogenous level of HIST1H3A only when phosphorylated at serine 10.
Form	Liquid
Purification	Affinity Chromatography
Recommend Usage	Immunofluorescence (1:100-1:200) Immunohistochemistry (1:50-1:100) Western Blot (1:500-1:1000) The optimal working dilution should be determined by the end user.
Storage Buffer	In PBS (without Mg^{2+} and Ca^{2+}), 150 mM NaCl, pH 7.4 (50% glycerol, 0.02% sodium azide)
Storage Instruction	Store at 4°C. For long term storage store at -20°C. Aliquot to avoid repeated freezing and thawing.
Note	This product contains sodium azide: a POISONOUS AND HAZARDOUS SUBSTANCE which should be handled by trained staff only.

Applications

- Western Blot (Cell lysate)

Western blot analysis of Lane 1: SK-BR-3 cells, Lane 2: Insulin and EGF treated SK-BR-3 cells with HIST1H3A (phospho S10) polyclonal antibody (Cat# PAB29616) at 1:500-1:1000 dilution.

- Immunohistochemistry (Formalin/PFA-fixed paraffin-embedded sections)

Immunohistochemical staining of human breast cancer tissue by HIST1H3A (phospho S10) polyclonal antibody (Cat# PAB29616) without blocking peptide (A) or preincubated with blocking peptide (B) under 1:50-1:100 dilution.

- Immunofluorescence

Immunofluorescent staining of methanol-fixed Hela cells using HIST1H3A (phospho S10) polyclonal antibody (Cat# PAB29616) at 1:100-1:200 dilution.

Gene Info — HIST1H3A

Entrez GeneID [8350](#)

Protein Accession# [P68431](#)

Gene Name HIST1H3A

Gene Alias H3/A, H3FA

Gene Description histone cluster 1, H3a

Omim ID [602810](#)

Gene Ontology [Hyperlink](#)

Gene Summary Histones are basic nuclear proteins that are responsible for the nucleosome structure of the chromosomal fiber in eukaryotes. This structure consists of approximately 146 bp of DNA wrapped around a nucleosome, an octamer composed of pairs of each of the four core histones (H2A, H2B, H3, and H4). The chromatin fiber is further compacted through the interaction of a linker histone, H1, with the DNA between the nucleosomes to form higher order chromatin structures. This gene is intronless and encodes a member of the histone H3 family. Transcripts from this gene lack polyA tails; instead, they contain a palindromic termination element. This gene is found in the large histone gene cluster on chromosome 6p22-p21.3. [provided by RefSeq]

Other Designations H3 histone family, member A|histone 1, H3a

Pathway

- [Systemic lupus erythematosus](#)