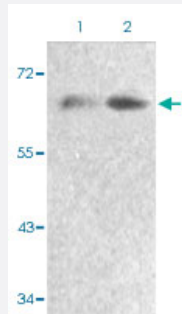


# FOXO4 (phospho S197) polyclonal antibody

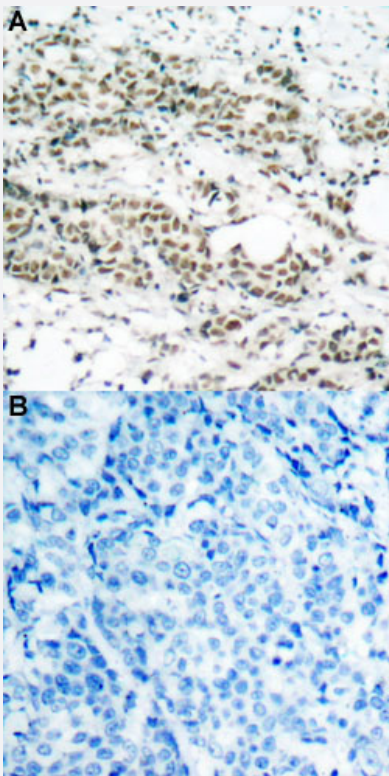
Catalog # PAB29614      Size 100 uL

## Applications



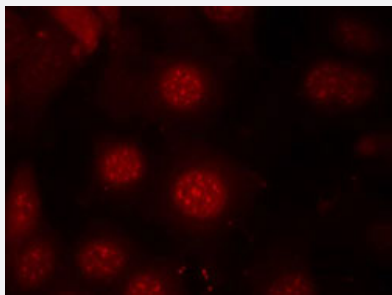
### Western Blot (Cell lysate)

Western blot analysis of Lane 1: 293 cells, Lane 2: serum treated 293 cells with FOXO4 (phospho S197) polyclonal antibody (Cat# PAB29614) at 1:500-1:1000 dilution.



### Immunohistochemistry (Formalin/PFA-fixed paraffin-embedded sections)

Immunohistochemical staining of human breast cancer tissue by FOXO4 (phospho S197) polyclonal antibody (Cat# PAB29614) without blocking peptide (A) or preincubated with blocking peptide (B) under 1:50-1:100 dilution.



## Immunofluorescence

Immunofluorescent staining of methanol-fixed MCF7 cells using FOXO4 (phospho S197) polyclonal antibody (Cat# PAB29614) at 1:100-1:200 dilution.

## Specification

<b>Product Description</b>	Rabbit polyclonal antibody raised against synthetic phosphopeptide of human FOXO4.
<b>Immunogen</b>	A synthetic phosphopeptide (conjugated with KLH) corresponding to residues surrounding S197 of human FOXO4.
<b>Host</b>	Rabbit
<b>Theoretical MW (kDa)</b>	65
<b>Reactivity</b>	Human, Mouse, Rabbit
<b>Specificity</b>	FOXO4 (phospho S197) polyclonal antibody detects endogenous level FOXO4 only when phosphorylated at serine 197.
<b>Form</b>	Liquid
<b>Purification</b>	Affinity Chromatography
<b>Recommend Usage</b>	Immunofluorescence (1:100-1:200) Immunohistochemistry (1:50-1:100) Western Blot (1:500-1:1000) The optimal working dilution should be determined by the end user.
<b>Storage Buffer</b>	In PBS (without $Mg^{2+}$ and $Ca^{2+}$ ), 150 mM NaCl, pH 7.4 (50% glycerol, 0.02% sodium azide)
<b>Storage Instruction</b>	Store at 4°C. For long term storage store at -20°C. Aliquot to avoid repeated freezing and thawing.
<b>Note</b>	This product contains sodium azide: a POISONOUS AND HAZARDOUS SUBSTANCE which should be handled by trained staff only.

## Applications

- Western Blot (Cell lysate)

Western blot analysis of Lane 1: 293 cells, Lane 2: serum treated 293 cells with FOXO4 (phospho S197) polyclonal antibody (Cat# PAB29614) at 1:500-1:1000 dilution.

- Immunohistochemistry (Formalin/PFA-fixed paraffin-embedded sections)

Immunohistochemical staining of human breast cancer tissue by FOXO4 (phospho S197) polyclonal antibody (Cat# PAB29614) without blocking peptide (A) or preincubated with blocking peptide (B) under 1:50-1:100 dilution.

- Immunofluorescence

Immunofluorescent staining of methanol-fixed MCF7 cells using FOXO4 (phospho S197) polyclonal antibody (Cat# PAB29614) at 1:100-1:200 dilution.

## Gene Info — FOXO4

Entrez GeneID [4303](#)

Protein Accession# [P98177](#)

Gene Name FOXO4

Gene Alias AFX, AFX1, MGC120490, MLLT7

Gene Description forkhead box O4

Omim ID [300033](#)

Gene Ontology [Hyperlink](#)

Gene Summary 7[myeloid/lymphoid or mixed-lineage leukemia (trithorax homolog

Other Designations OTTHUMP00000023496[myeloid/lymphoid or mixed-lineage leukemia (trithorax homolog); translocated to, 7[myeloid/lymphoid or mixed-lineage leukemia (trithorax homolog, Drosophila); translocated to, 7

## Disease

- [Obesity](#)