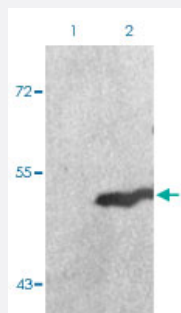


# GSK3A (phospho S21) polyclonal antibody

Catalog # PAB29598

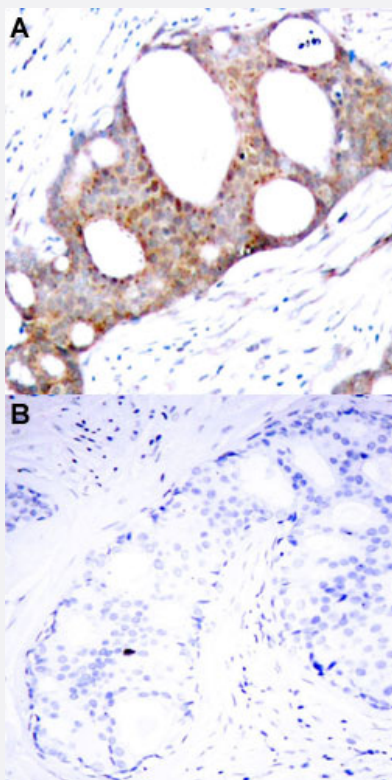
Size 100 uL

## Applications



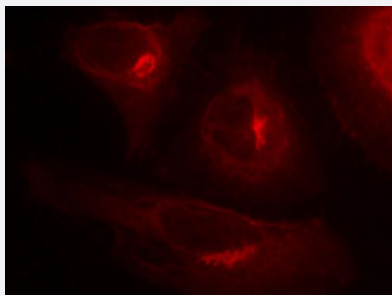
### Western Blot (Cell lysate)

Western blot analysis of Lane 1: 293 cells, Lane 2: serum treated 293 cells with GSK3A (phospho S21) polyclonal antibody (Cat# PAB29598) at 1:500-1:1000 dilution.



### Immunohistochemistry (Formalin/PFA-fixed paraffin-embedded sections)

Immunohistochemical staining of human breast cancer tissue by GSK3A (phospho S21) polyclonal antibody (Cat# PAB29598) without blocking peptide (A) or preincubated with blocking peptide (B) under 1:50-1:100 dilution.



## Immunofluorescence

Immunofluorescent staining of methanol-fixed HeLa cells shows positivity in cytoplasmic using GSK3A (phospho S21) polyclonal antibody (Cat# PAB29598) at 1:100-1:200 dilution.

## Specification

<b>Product Description</b>	Rabbit polyclonal antibody raised against synthetic phosphopeptide of human GSK3A.
<b>Immunogen</b>	A synthetic phosphopeptide (conjugated with KLH) corresponding to residues surrounding S21 of human GSK3A.
<b>Host</b>	Rabbit
<b>Theoretical MW (kDa)</b>	51
<b>Reactivity</b>	Human, Mouse, Rabbit
<b>Specificity</b>	GSK3A (phospho S21) polyclonal antibody detects endogenous level of GSK3A only when phosphorylated at serine 21 and does not detect GSK3B when phosphorylated at serine 9.
<b>Form</b>	Liquid
<b>Purification</b>	Affinity Chromatography
<b>Recommend Usage</b>	Immunofluorescence (1:100-1:200) Immunohistochemistry (1:50-1:100) Western Blot (1:500-1:1000) The optimal working dilution should be determined by the end user.
<b>Storage Buffer</b>	In PBS (without $Mg^{2+}$ and $Ca^{2+}$ ), 150 mM NaCl, pH 7.4 (50% glycerol, 0.02% sodium azide)
<b>Storage Instruction</b>	Store at 4°C. For long term storage store at -20°C. Aliquot to avoid repeated freezing and thawing.
<b>Note</b>	This product contains sodium azide: a POISONOUS AND HAZARDOUS SUBSTANCE which should be handled by trained staff only.

## Applications

- Western Blot (Cell lysate)

Western blot analysis of Lane 1: 293 cells, Lane 2: serum treated 293 cells with GSK3A (phospho S21) polyclonal antibody (Cat# PAB29598) at 1:500-1:1000 dilution.

- Immunohistochemistry (Formalin/PFA-fixed paraffin-embedded sections)

Immunohistochemical staining of human breast cancer tissue by GSK3A (phospho S21) polyclonal antibody (Cat# PAB29598) without blocking peptide (A) or preincubated with blocking peptide (B) under 1:50-1:100 dilution.

- Immunofluorescence

Immunofluorescent staining of methanol-fixed Hela cells shows positivity in cytoplasmic using GSK3A (phospho S21) polyclonal antibody (Cat# PAB29598) at 1:100-1:200 dilution.

## Gene Info — GSK3A

Entrez GeneID [2931](#)

Protein Accession# [P49840](#)

Gene Name GSK3A

Gene Alias DKFZp686D0638

Gene Description glycogen synthase kinase 3 alpha

Omim ID [606784](#)

Gene Ontology [Hyperlink](#)

**Gene Summary** Glycogen synthase kinase 3-alpha (GSK3A; EC {2.7.1.37}) is a multifunctional protein serine kinase, homologous to Drosophila 'shaggy' (zeste-white3) and implicated in the control of several regulatory proteins including glycogen synthase (see GYS1, {138570}) and transcription factors (e.g., JUN, {165160}). It also plays a role in the WNT ({164820}) and PI3K (see PIK3CG, {601232}) signaling pathways (see review by {1:Ali et al. (2001)}).[supplied by OMIM]

**Other Designations** -

## Pathway

- [Chemokine signaling pathway](#)

## Disease

- [Cognition](#)
- [Coronary Disease](#)
- [Genetic Predisposition to Disease](#)
- [Schizophrenia](#)
- [Schizophrenic Psychology](#)
- [Weight Gain](#)