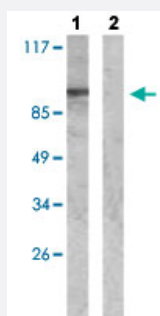


WASF1 (phospho Y125) polyclonal antibody

Catalog # PAB29590

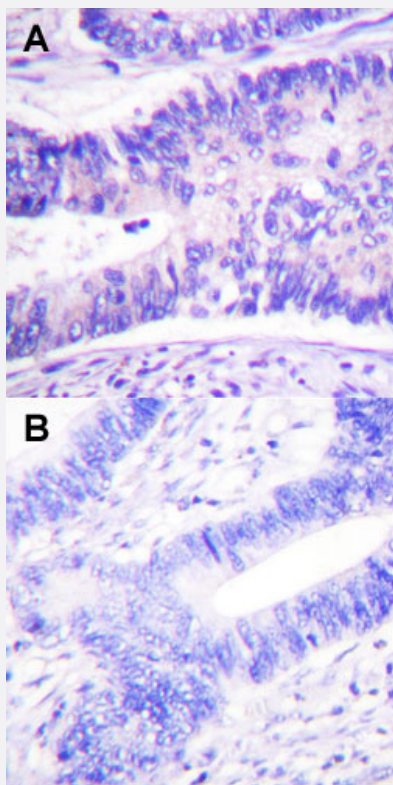
Size 100 uL

Applications



Western Blot (Cell lysate)

Western blot analysis of Lane 1: Insulin (0.01 U/mL, 15 mins) treated NIH/3T3 cells, Lane 2: Synthesized peptide treated NIH/3T3 cells with WASF1 (phospho Y125) polyclonal antibody (Cat # PAB29590) at 1:500-1:3000 dilution.



Immunohistochemistry (Formalin/PFA-fixed paraffin-embedded sections)

Immunohistochemical staining (Formalin-fixed paraffin-embedded sections) of human colon carcinoma tissue with WASF1 (phospho Y125) polyclonal antibody (Cat # PAB29590) under 1:50-1:100 dilution (A) or treated with synthesized peptide (B).

Specification

Product Description

Rabbit polyclonal antibody raised against synthetic phosphopeptide of human WASF1.

Immunogen	A synthetic phosphopeptide (conjugated with KLH) corresponding to residues surrounding Y125 of human WASF1.
Host	Rabbit
Theoretical MW (kDa)	70
Reactivity	Human, Mouse
Specificity	WASF1 (phospho Y125) polyclonal antibody detects endogenous levels of human WASF1 only when phosphorylated at tyrosine 125.
Form	Liquid
Purification	Affinity chromatography
Isotype	IgG
Recommend Usage	Immunohistochemistry (Formalin/PFA-fixed paraffin-embedded sections) (1:50-1:100) Western Blot (1:500-1:3000) The optimal working dilution should be determined by the end user.
Storage Buffer	In PBS (without Mg^{2+} and Ca^{2+}), 150 mM NaCl, pH 7.4 (50% glycerol, 0.02% sodium azide)
Storage Instruction	Store at -20°C. Aliquot to avoid repeated freezing and thawing.
Note	This product contains sodium azide: a POISONOUS AND HAZARDOUS SUBSTANCE which should be handled by trained staff only.

Applications

- Western Blot (Cell lysate)

Western blot analysis of Lane 1: Insulin (0.01 U/mL, 15 mins) treated NIH/3T3 cells, Lane 2: Synthesized peptide treated NIH/3T3 cells with WASF1 (phospho Y125) polyclonal antibody (Cat # PAB29590) at 1:500-1:3000 dilution.

- Immunohistochemistry (Formalin/PFA-fixed paraffin-embedded sections)

Immunohistochemical staining (Formalin-fixed paraffin-embedded sections) of human colon carcinoma tissue with WASF1 (phospho Y125) polyclonal antibody (Cat # PAB29590) under 1:50-1:100 dilution (A) or treated with synthesized peptide (B).

Gene Info — WASF1

Entrez GeneID [8936](#)

Protein Accession# [Q92558](#)

Gene Name	WASF1
Gene Alias	FLJ31482, KIAA0269, SCAR1, WAVE, WAVE1
Gene Description	WAS protein family, member 1
Omim ID	605035
Gene Ontology	Hyperlink
Gene Summary	The protein encoded by this gene, a member of the Wiskott-Aldrich syndrome protein (WASP)-family, plays a critical role downstream of Rac, a Rho-family small GTPase, in regulating the actin cytoskeleton required for membrane ruffling. It has been shown to associate with an actin nucleation core Arp2/3 complex while enhancing actin polymerization in vitro. Wiskott-Aldrich syndrome is a disease of the immune system, likely due to defects in regulation of actin cytoskeleton. Multiple alternatively spliced transcript variants encoding the same protein have been found for this gene. [provided by RefSeq]
Other Designations	OTTHUMP00000016990 Wiskott-Aldrich syndrome protein family member 1 homology of dictyostelium scar 1 verprolin homology domain-containing protein 1

Pathway

- [Adherens junction](#)
- [Fc gamma R-mediated phagocytosis](#)
- [Regulation of actin cytoskeleton](#)