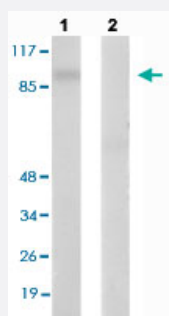


# STAT5B (phospho S731) polyclonal antibody

Catalog # PAB29588

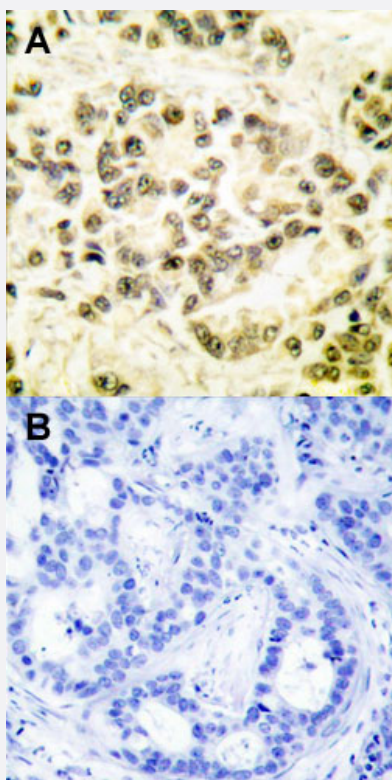
Size 100 uL

## Applications



### Western Blot (Cell lysate)

Western blot analysis of Lane 1: EGF (200 ng/mL, 30 mins) treated Raw 264.7 cells, Lane 2: Synthesized peptide treated Raw 264.7 cells with STAT5B (phospho S731) polyclonal antibody (Cat # PAB29588) at 1:500-1:3000 dilution.



### Immunohistochemistry (Formalin/PFA-fixed paraffin-embedded sections)

Immunohistochemical staining (Formalin-fixed paraffin-embedded sections) of human breast carcinoma tissue with STAT5B (phospho S731) polyclonal antibody (Cat # PAB29588) under 1:50-1:100 dilution (A) or treated with synthesized peptide (B).

## Specification

### Product Description

Rabbit polyclonal antibody raised against synthetic phosphopeptide of human STAT5B.

<b>Immunogen</b>	A synthetic phosphopeptide (conjugated with KLH) corresponding to residues surrounding S731 of human STAT5B.
<b>Host</b>	Rabbit
<b>Theoretical MW (kDa)</b>	90
<b>Reactivity</b>	Human, Mouse, Rat
<b>Specificity</b>	STAT5B (phospho S731) polyclonal antibody detects endogenous levels of human STAT5B only when phosphorylated at serine 731.
<b>Form</b>	Liquid
<b>Purification</b>	Affinity chromatography
<b>Isotype</b>	IgG
<b>Recommend Usage</b>	Immunohistochemistry (Formalin/PFA-fixed paraffin-embedded sections) (1:50-1:100) Western Blot (1:500-1:3000) The optimal working dilution should be determined by the end user.
<b>Storage Buffer</b>	In PBS (without $Mg^{2+}$ and $Ca^{2+}$ ), 150 mM NaCl, pH 7.4 (50% glycerol, 0.02% sodium azide)
<b>Storage Instruction</b>	Store at -20°C. Aliquot to avoid repeated freezing and thawing.
<b>Note</b>	This product contains sodium azide: a POISONOUS AND HAZARDOUS SUBSTANCE which should be handled by trained staff only.

## Applications

- Western Blot (Cell lysate)

Western blot analysis of Lane 1: EGF (200 ng/mL, 30 mins) treated Raw 264.7 cells, Lane 2: Synthesized peptide treated Raw 264.7 cells with STAT5B (phospho S731) polyclonal antibody (Cat # PAB29588) at 1:500-1:3000 dilution.

- Immunohistochemistry (Formalin/PFA-fixed paraffin-embedded sections)

Immunohistochemical staining (Formalin-fixed paraffin-embedded sections) of human breast carcinoma tissue with STAT5B (phospho S731) polyclonal antibody (Cat # PAB29588) under 1:50-1:100 dilution (A) or treated with synthesized peptide (B).

## Gene Info — STAT5B

**Entrez GeneID** [6777](#)

**Protein Accession#** [P51692](#)

Gene Name	STAT5B
Gene Alias	STAT5
Gene Description	signal transducer and activator of transcription 5B
Omim ID	<a href="#">245590 604260</a>
Gene Ontology	<a href="#">Hyperlink</a>
Gene Summary	<p>The protein encoded by this gene is a member of the STAT family of transcription factors. In response to cytokines and growth factors, STAT family members are phosphorylated by the receptor associated kinases, and then form homo- or heterodimers that translocate to the cell nucleus where they act as transcription activators. This protein mediates the signal transduction triggered by various cell ligands, such as IL2, IL4, CSF1, and different growth hormones. It has been shown to be involved in diverse biological processes, such as TCR signaling, apoptosis, adult mammary gland development, and sexual dimorphism of liver gene expression. This gene was found to fuse to retinoic acid receptor-alpha (RARA) gene in a small subset of acute promyelocytic leukemias (APLL). The dysregulation of the signaling pathways mediated by this protein may be the cause of the APLL. [provided by RefSeq]</p>
Other Designations	transcription factor STAT5B

## Pathway

- [Acute myeloid leukemia](#)
- [Chemokine signaling pathway](#)
- [Chronic myeloid leukemia](#)
- [ErbB signaling pathway](#)
- [Jak-STAT signaling pathway](#)
- [Pathways in cancer](#)

## Disease

- [Birth Weight](#)
- [Breast cancer](#)
- [Breast Neoplasms](#)
- [Cardiovascular Diseases](#)

- [Cleft Lip](#)
- [Cleft Palate](#)
- [Diabetes Mellitus](#)
- [Edema](#)
- [Genetic Predisposition to Disease](#)
- [Glioblastoma](#)
- [Glioma](#)
- [Leukemia](#)
- [Meningeal Neoplasms](#)
- [Meningioma](#)
- [Tooth Abnormalities](#)