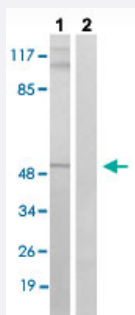


SRF (phospho S77) polyclonal antibody

Catalog # PAB29587

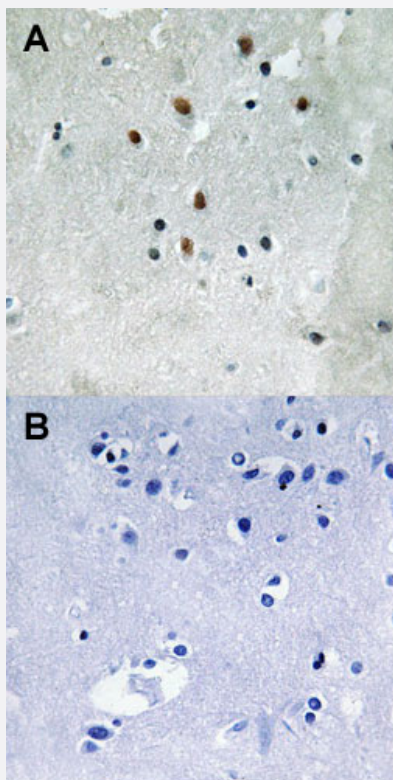
Size 100 uL

Applications



Western Blot (Cell lysate)

Western blot analysis of Lane 1: PMA (125 ng/mL, 30 mins) treated Jurkat cells, Lane 2: Synthesized peptide treated Jurkat cells with SRF (phospho S77) polyclonal antibody (Cat # PAB29587) at 1:500-1:3000 dilution.



Immunohistochemistry (Formalin/PFA-fixed paraffin-embedded sections)

Immunohistochemical staining (Formalin-fixed paraffin-embedded sections) of human brain tissue with SRF (phospho S77) polyclonal antibody (Cat # PAB29587) under 1:50-1:100 dilution (A) or treated with synthesized peptide (B).

Specification

Product Description

Rabbit polyclonal antibody raised against synthetic phosphopeptide of human SRF.

Immunogen	A synthetic phosphopeptide (conjugated with KLH) corresponding to residues surrounding S77 of human SRF.
Host	Rabbit
Theoretical MW (kDa)	52
Reactivity	Human, Mouse
Specificity	SRF (phospho S77) polyclonal antibody detects endogenous levels of human SRF only when phosphorylated at serine 77.
Form	Liquid
Purification	Affinity chromatography
Isotype	IgG
Recommend Usage	Immunohistochemistry (Formalin/PFA-fixed paraffin-embedded sections) (1:50-1:100) Western Blot (1:500-1:3000) The optimal working dilution should be determined by the end user.
Storage Buffer	In PBS (without Mg^{2+} and Ca^{2+}), 150 mM NaCl, pH 7.4 (50% glycerol, 0.02% sodium azide)
Storage Instruction	Store at -20°C. Aliquot to avoid repeated freezing and thawing.
Note	This product contains sodium azide: a POISONOUS AND HAZARDOUS SUBSTANCE which should be handled by trained staff only.

Applications

- Western Blot (Cell lysate)

Western blot analysis of Lane 1: PMA (125 ng/mL, 30 mins) treated Jurkat cells, Lane 2: Synthesized peptide treated Jurkat cells with SRF (phospho S77) polyclonal antibody (Cat # PAB29587) at 1:500-1:3000 dilution.

- Immunohistochemistry (Formalin/PFA-fixed paraffin-embedded sections)

Immunohistochemical staining (Formalin-fixed paraffin-embedded sections) of human brain tissue with SRF (phospho S77) polyclonal antibody (Cat # PAB29587) under 1:50-1:100 dilution (A) or treated with synthesized peptide (B).

Gene Info — SRF

Entrez GeneID [6722](#)

Protein Accession# [P11831](#)

Gene Name	SRF
Gene Alias	MCM1
Gene Description	serum response factor (c-fos serum response element-binding transcription factor)
Omim ID	600589
Gene Ontology	Hyperlink
Gene Summary	<p>This gene encodes a ubiquitous nuclear protein that stimulates both cell proliferation and differentiation. It is a member of the MADS (MCM1, Agamous, Deficiens, and SRF) box superfamily of transcription factors. This protein binds to the serum response element (SRE) in the promoter region of target genes. This protein regulates the activity of many immediate-early genes, for example c-fos, and thereby participates in cell cycle regulation, apoptosis, cell growth, and cell differentiation. This gene is the downstream target of many pathways; for example, the mitogen-activated protein kinase pathway (MAPK) that acts through the ternary complex factors (TCFs). [provided by RefSeq]</p>
Other Designations	OTTHUMP00000039820

Pathway

- [MAPK signaling pathway](#)

Disease

- [Alzheimer disease](#)
- [Cardiovascular Diseases](#)
- [Diabetes Complications](#)
- [Diabetes Mellitus](#)
- [Edema](#)
- [Metabolic Syndrome X](#)
- [Neoplasms](#)
- [Osteoporosis](#)
- [Tobacco Use Disorder](#)