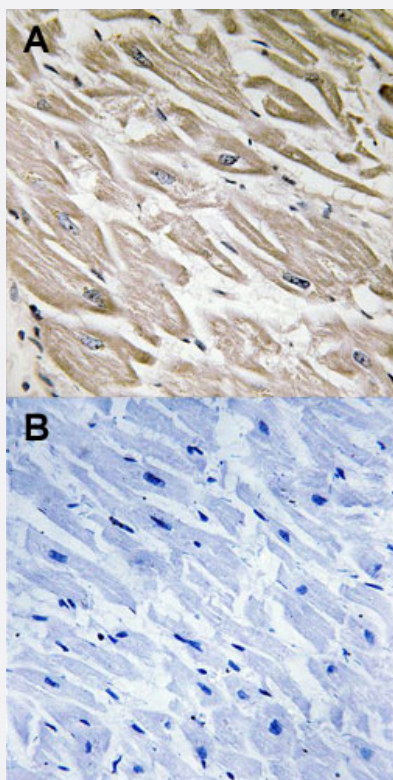


# PPP1R2 (phospho S120/S121) polyclonal antibody

Catalog # PAB29586

Size 100 uL

## Applications



### Immunohistochemistry (Formalin/PFA-fixed paraffin-embedded sections)

Immunohistochemical staining (Formalin-fixed paraffin-embedded sections) of human heart tissue with PPP1R2 (phospho S120/S121) polyclonal antibody (Cat # PAB29586) (A) or treated with synthesized peptide (B).

## Specification

<b>Product Description</b>	Rabbit polyclonal antibody raised against synthetic phosphopeptide of human PPP1R2.
<b>Immunogen</b>	A synthetic phosphopeptide (conjugated with KLH) corresponding to residues surrounding S120/S121 of human PPP1R2.
<b>Host</b>	Rabbit
<b>Reactivity</b>	Human, Mouse, Rat
<b>Specificity</b>	PPP1R2 (phospho S120/S121) polyclonal antibody detects endogenous levels of human PPP1R2 only when phosphorylated at serine 120 and serine 121.

Form	Liquid
Purification	Affinity chromatography
Isotype	IgG
Recommend Usage	Immunohistochemistry (Formalin/PFA-fixed paraffin-embedded sections) (1:50-1:100) The optimal working dilution should be determined by the end user.
Storage Buffer	In PBS (without $Mg^{2+}$ and $Ca^{2+}$ ), 150 mM NaCl, pH 7.4 (50% glycerol, 0.02% sodium azide)
Storage Instruction	Store at -20°C. Aliquot to avoid repeated freezing and thawing.
Note	This product contains sodium azide: a POISONOUS AND HAZARDOUS SUBSTANCE which should be handled by trained staff only.

## Applications

- Immunohistochemistry (Formalin/PFA-fixed paraffin-embedded sections)

Immunohistochemical staining (Formalin-fixed paraffin-embedded sections) of human heart tissue with PPP1R2 (phospho S120/S121) polyclonal antibody (Cat # PAB29586) (A) or treated with synthesized peptide (B).

## Gene Info — PPP1R2

Entrez GeneID	<a href="#">5504</a>
Protein Accession#	<a href="#">P41236</a>
Gene Name	PPP1R2
Gene Alias	IPP2, MGC87148
Gene Description	protein phosphatase 1, regulatory (inhibitor) subunit 2
Omim ID	<a href="#">601792</a>
Gene Ontology	<a href="#">Hyperlink</a>
Gene Summary	O
Other Designations	phosphoprotein phosphatase protein phosphatase 1, regulatory subunit 2