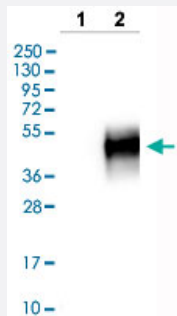


CD300C polyclonal antibody

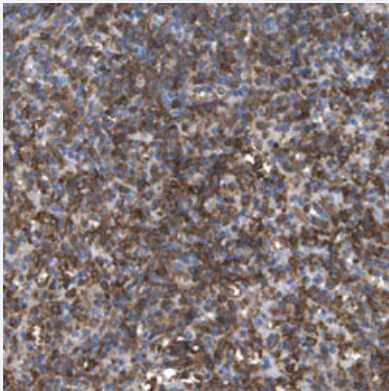
Catalog # PAB29581 Size 100 uL

Applications



Western Blot (Transfected lysate)

Western blot analysis of Lane 1: Negative control (vector only transfected HEK293T lysate), Lane 2: Over-expression lysate (Co-expressed with a C-terminal myc-DDK tag (~3.1 kDa) in mammalian HEK293T cells) with CD300C polyclonal antibody (Cat # PAB29581).



Immunohistochemistry (Formalin/PFA-fixed paraffin-embedded sections)

Immunohistochemical staining (Formalin-fixed paraffin-embedded sections) of human spleen shows strong cytoplasmic positivity with CD300C polyclonal antibody (Cat # PAB29581).

Specification

Product Description	Rabbit polyclonal antibody raised against partial recombinant human CD300C.
Immunogen	Recombinant protein corresponding to amino acids 115-183 of human CD300C.
Sequence	PWLRDFHDPIVEVEVSVPAGTTASSPQSSMGTS GPPTKLPVHTWPSVTRKDSPEPSHPGSL FSNVR
Host	Rabbit
Reactivity	Human

Form	Liquid
Purification	Antigen affinity purification
Isotype	IgG
Recommend Usage	Immunohistochemistry (Formalin/PFA-fixed paraffin-embedded sections) (1:200-1:500) Western Blot (1:100-1:250) The optimal working dilution should be determined by the end user.
Storage Buffer	In PBS, pH 7.2 (40% glycerol, 0.02% sodium azide)
Storage Instruction	Store at 4°C. For long term storage store at -20°C. Aliquot to avoid repeated freezing and thawing.
Note	This product contains sodium azide: a POISONOUS AND HAZARDOUS SUBSTANCE which should be handled by trained staff only.

Applications

- Western Blot (Transfected lysate)

Western blot analysis of Lane 1: Negative control (vector only transfected HEK293T lysate), Lane 2: Over-expression lysate (Co-expressed with a C-terminal myc-DDK tag (~3.1 kDa) in mammalian HEK293T cells) with CD300C polyclonal antibody (Cat # PAB29581).

- Immunohistochemistry (Formalin/PFA-fixed paraffin-embedded sections)

Immunohistochemical staining (Formalin-fixed paraffin-embedded sections) of human spleen shows strong cytoplasmic positivity with CD300C polyclonal antibody (Cat # PAB29581).

Gene Info — CD300C

Entrez GeneID	10871
Protein Accession#	Q08708
Gene Name	CD300C
Gene Alias	CMRF-35A, CMRF35, CMRF35A, CMRF35A1, IGSF16, LIR
Gene Description	CD300c molecule
Omim ID	606786
Gene Ontology	Hyperlink

Gene Summary

The CMRF35 antigen, which was identified by reactivity with a monoclonal antibody, is present on monocytes, neutrophils, and some T and B lymphocytes (Jackson et al., 1992 [PubMed 1349532]).[supplied by OMIM]

Other Designations

CD300C antigen|CD300c antigen|CMRF35 antigen|CMRF35 leukocyte immunoglobulin-like receptor|CMRF35A leukocyte immunoglobulin-like receptor|OTTHUMP00000070874