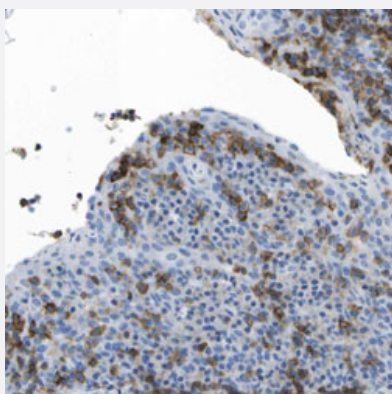


MS4A1 polyclonal antibody

Catalog # PAB29580 Size 100 uL

Applications



Immunohistochemistry (Formalin/PFA-fixed paraffin-embedded sections)

Immunohistochemical staining (Formalin-fixed paraffin-embedded sections) of human tonsil shows strong cytoplasmic positivity in lymphoid cells with MS4A1 polyclonal antibody (Cat # PAB29580) at 1:20 - 1:50 dilution.

Specification

Product Description	Rabbit polyclonal antibody raised against partial recombinant human MS4A1.
Immunogen	Recombinant protein corresponding to amino acids 149-184 of human MS4A1.
Sequence	MESLNFIRAHTPYINIYNCEPANPSEKNPSTQYCY
Host	Rabbit
Reactivity	Human
Form	Liquid
Purification	Antigen affinity purification
Isotype	IgG
Recommend Usage	Immunohistochemistry (Formalin/PFA-fixed paraffin-embedded sections) (1:20-1:50) The optimal working dilution should be determined by the end user.
Storage Buffer	In PBS, pH 7.2 (40% glycerol, 0.02% sodium azide)

Storage Instruction

Store at 4°C. For long term storage store at -20°C.
Aliquot to avoid repeated freezing and thawing.

Note

This product contains sodium azide: a POISONOUS AND HAZARDOUS SUBSTANCE which should be handled by trained staff only.

Applications

- Immunohistochemistry (Formalin/PFA-fixed paraffin-embedded sections)

Immunohistochemical staining (Formalin-fixed paraffin-embedded sections) of human tonsil shows strong cytoplasmic positivity in lymphoid cells with MS4A1 polyclonal antibody (Cat # PAB29580) at 1:20 - 1:50 dilution.

Gene Info — MS4A1

Entrez GeneID[931](#)**Protein Accession#**[P11836](#)**Gene Name**

MS4A1

Gene Alias

B1, Bp35, CD20, LEU-16, MGC3969, MS4A2, S7

Gene Description

membrane-spanning 4-domains, subfamily A, member 1

Omim ID[112210](#)**Gene Ontology**[Hyperlink](#)**Gene Summary**

This gene encodes a member of the membrane-spanning 4A gene family. Members of this nascent protein family are characterized by common structural features and similar intron/exon splice boundaries and display unique expression patterns among hematopoietic cells and nonlymphoid tissues. This gene encodes a B-lymphocyte surface molecule which plays a role in the development and differentiation of B-cells into plasma cells. This family member is localized to 11q12, among a cluster of family members. Alternative splicing of this gene results in two transcript variants which encode the same protein. [provided by RefSeq]

Other Designations

B-lymphocyte cell-surface antigen B1|CD20 antigen|CD20 receptor

Pathway

- [Hematopoietic cell lineage](#)

Disease

- [Breast cancer](#)
- [Breast Neoplasms](#)
- [Genetic Predisposition to Disease](#)
- [Lymphoma](#)
- [Neoplasm Recurrence](#)
- [Ovarian cancer](#)