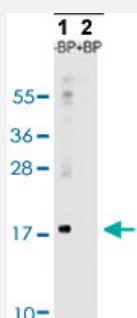


MAP1LC3A polyclonal antibody

Catalog # PAB29558

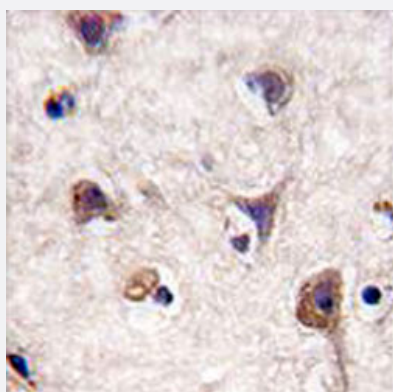
Size 400 uL

Applications



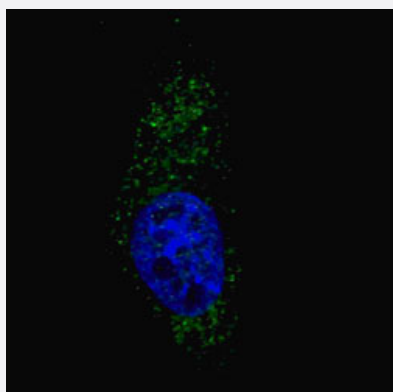
Western Blot (Tissue lysate)

Western blot analysis of Lane 1: Rat brain tissue lysates, Lane 2: Rat brain tissue lysates treated with blocking peptide with MAP1LC3A polyclonal antibody (Cat # PAB29558) at 1:1000 dilution.



Immunohistochemistry (Formalin/PFA-fixed paraffin-embedded sections)

Immunohistochemical staining (Formalin-fixed paraffin-embedded sections) of human brain tissue with MAP1LC3A polyclonal antibody (Cat # PAB29558) at 1:50-100 dilution.



Immunofluorescence

Immunofluorescent staining of Chloroquine (50 uM, 16h) treated U251 cells with MAP1LC3A polyclonal antibody (Cat # PAB29558) shows positivity in cytoplasmic autophagic vacuoles at 1:200 dilution.

Specification

Product Description	Rabbit polyclonal antibody raised against partial synthetic protein of human MAP1LC3A.
Immunogen	A synthetic peptide (conjugated with KLH) corresponding to amino acids 1-30 at N-terminus of human MAP1LC3A.
Host	Rabbit
Theoretical MW (kDa)	14.3
Reactivity	Human, Mouse, Rat
Form	Liquid
Purification	Ammonium sulfate precipitation
Isotype	Ig
Recommend Usage	Immunofluorescence (1:200) Immunohistochemistry (Formalin/PFA-fixed paraffin-embedded sections) (1:50-100) Western Blot (1:1000) The optimal working dilution should be determined by the end user.
Storage Buffer	In PBS (0.09% sodium azide)
Storage Instruction	Store at 4°C. For long term storage store at -20°C. Aliquot to avoid repeated freezing and thawing.
Note	This product contains sodium azide: a POISONOUS AND HAZARDOUS SUBSTANCE which should be handled by trained staff only.

Applications

- Western Blot (Tissue lysate)

Western blot analysis of Lane 1: Rat brain tissue lysates, Lane 2: Rat brain tissue lysates treated with blocking peptide with MAP1LC3A polyclonal antibody (Cat # PAB29558) at 1:1000 dilution.

- Immunohistochemistry (Formalin/PFA-fixed paraffin-embedded sections)

Immunohistochemical staining (Formalin-fixed paraffin-embedded sections) of human brain tissue with MAP1LC3A polyclonal antibody (Cat # PAB29558) at 1:50-100 dilution.

- Immunofluorescence

Immunofluorescent staining of Chloroquine (50 μ M, 16h) treated U251 cells with MAP1LC3A polyclonal antibody (Cat # PAB29558) shows positivity in cytoplasmic autophagic vacuoles at 1:200 dilution.

Gene Info — MAP1LC3A

Entrez GeneID	84557
Gene Name	MAP1LC3A
Gene Alias	LC3, LC3A, MAP1ALC3, MAP1BLC3
Gene Description	microtubule-associated protein 1 light chain 3 alpha
Omim ID	601242
Gene Ontology	Hyperlink
Gene Summary	MAP1A and MAP1B are microtubule-associated proteins which mediate the physical interactions between microtubules and components of the cytoskeleton. MAP1A and MAP1B each consist of a heavy chain subunit and multiple light chain subunits. The protein encoded by this gene is one of the light chain subunits and can associate with either MAP1A or MAP1B. Two transcript variants encoding different isoforms have been found for this gene. [provided by RefSeq]
Other Designations	MAP1 light chain 3-like protein 1 MAP1A/1B light chain 3 A MAP1A/MAP1B LC3 A OTTHUMP0000030696 OTTHUMP00000030697 OTTHUMP00000030698 microtubule-associated proteins 1A/1B light chain 3