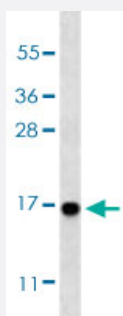


MAP1LC3A (Cleaved) polyclonal antibody

Catalog # PAB29557

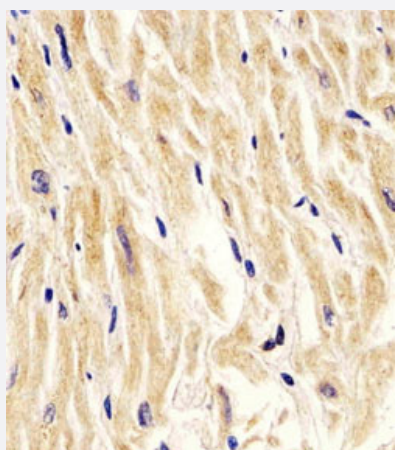
Size 400 uL

Applications



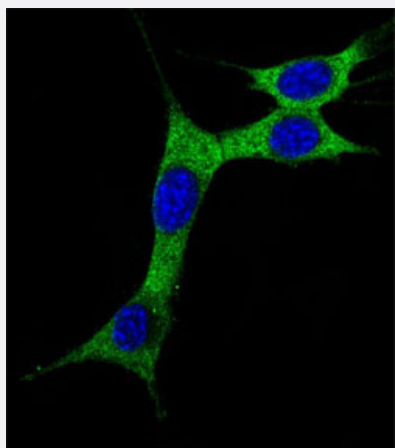
Western Blot (Tissue lysate)

Western blot analysis of mouse brain tissue lysates with MAP1LC3A (Cleaved) polyclonal antibody (Cat # PAB29557) at 1:1000 dilution.



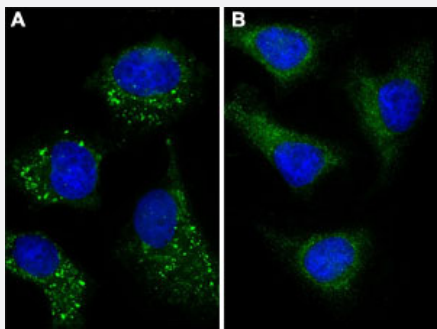
Immunohistochemistry (Formalin/PFA-fixed paraffin-embedded sections)

Immunohistochemical staining (Formalin-fixed paraffin-embedded sections) of human heart tissue with MAP1LC3A (Cleaved) polyclonal antibody (Cat # PAB29557) at 1:10-50 dilution.



Immunocytochemistry

Immunocytochemical analysis of NIH/3T3 cells with MAP1LC3A (Cleaved) polyclonal antibody (Cat # PAB29557) at 1:10-50 dilution.



Immunofluorescence

Immunofluorescent staining of Chloroquine (50 uM, 16h) treated (A) and untreated (B) HeLa cells with MAP1LC3A (Cleaved) polyclonal antibody (Cat # PAB29557) shows vesicles staining at 1: 25 dilution.

Specification

Product Description	Rabbit polyclonal antibody raised against partial synthetic protein of human cleaved MAP1LC3A.
Immunogen	A synthetic peptide (conjugated with KLH) corresponding to amino acids 89-120 of human cleaved MAP1LC3A.
Host	Rabbit
Theoretical MW (kDa)	14.3
Reactivity	Human, Mouse
Form	Liquid
Purification	Protein A purification
Isotype	Ig
Recommend Usage	Immunocytochemistry (1:10-50) Immunofluorescence (1:25) Immunohistochemistry (Formalin/PFA-fixed paraffin-embedded sections) (1:10-50) Western Blot (1:1000) The optimal working dilution should be determined by the end user.
Storage Buffer	In PBS (0.09% sodium azide)
Storage Instruction	Store at 4°C. For long term storage store at -20°C. Aliquot to avoid repeated freezing and thawing.
Note	This product contains sodium azide: a POISONOUS AND HAZARDOUS SUBSTANCE which should be handled by trained staff only.

Applications

- Western Blot (Tissue lysate)

Western blot analysis of mouse brain tissue lysates with MAP1LC3A (Cleaved) polyclonal antibody (Cat # PAB29557) at 1:1000 dilution.

- Immunohistochemistry (Formalin/PFA-fixed paraffin-embedded sections)

Immunohistochemical staining (Formalin-fixed paraffin-embedded sections) of human heart tissue with MAP1LC3A (Cleaved) polyclonal antibody (Cat # PAB29557) at 1:10-50 dilution.

- Immunocytochemistry

Immunocytochemical anyalysis of NIH/3T3 cells with MAP1LC3A (Cleaved) polyclonal antibody (Cat # PAB29557) at 1:10-50 dilution.

- Immunofluorescence

Immunofluorescent staining of Chloroquine (50 uM, 16h) treated (A) and untreated (B) HeLa cells with MAP1LC3A (Cleaved) polyclonal antibody (Cat # PAB29557) shows vesicles staining at 1: 25 dilution.

Gene Info — MAP1LC3A

Entrez GeneID [84557](#)

Gene Name MAP1LC3A

Gene Alias LC3, LC3A, MAP1ALC3, MAP1BLC3

Gene Description microtubule-associated protein 1 light chain 3 alpha

Omim ID [601242](#)

Gene Ontology [Hyperlink](#)

Gene Summary MAP1A and MAP1B are microtubule-associated proteins which mediate the physical interactions between microtubules and components of the cytoskeleton. MAP1A and MAP1B each consist of a heavy chain subunit and multiple light chain subunits. The protein encoded by this gene is one of the light chain subunits and can associate with either MAP1A or MAP1B. Two transcript variants encoding different isoforms have been found for this gene. [provided by RefSeq]

Other Designations MAP1 light chain 3-like protein 1|MAP1A/1B light chain 3 A|MAP1A/MAP1B LC3 A|OTTHUMP0000030696|OTTHUMP00000030697|OTTHUMP00000030698|microtubule-associated proteins 1A/1B light chain 3