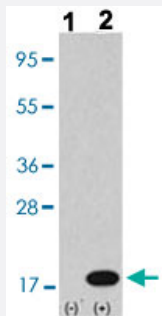


MAP1LC3B polyclonal antibody

Catalog # PAB29556

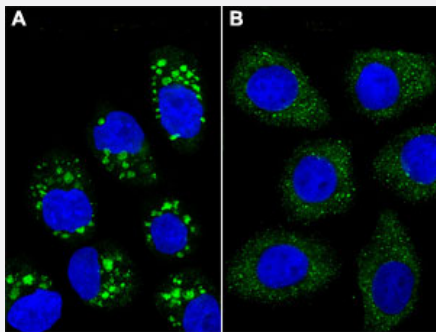
Size 200 uL

Applications



Western Blot (Transfected lysate)

Western blot analysis of Lane 1: Nontransfected 293 cell lysates (2 ug/lane), Lane 2: Transiently transfected 293 cell lysates (2 ug/lane) with MAP1LC3B polyclonal antibody (Cat # PAB29556) at 1:1000 dilution.



Immunofluorescence

Immunofluorescent staining of Chloroquine (50 uM, 16h) treated (A) and untreated (B) U251 cells with MAP1LC3B polyclonal antibody (Cat # PAB29556) at 1:100 dilution.

Specification

Product Description	Rabbit polyclonal antibody raised against partial synthetic protein of human MAP1LC3B.
Immunogen	A synthetic peptide (conjugated with KLH) corresponding to amino acids 1-30 at N-terminus of human MAP1LC3B.
Host	Rabbit
Theoretical MW (kDa)	14.7
Reactivity	Human, Rat
Form	Liquid

Purification	Ammonium sulfate precipitation
Isotype	Ig
Recommend Usage	Immunofluorescence (1:100) Immunohistochemistry (Formalin/PFA-fixed paraffin-embedded sections) (1:50-100) Western Blot (1:1000) The optimal working dilution should be determined by the end user.
Storage Buffer	In PBS (0.09% sodium azide)
Storage Instruction	Store at 4°C. For long term storage store at -20°C. Aliquot to avoid repeated freezing and thawing.
Note	This product contains sodium azide: a POISONOUS AND HAZARDOUS SUBSTANCE which should be handled by trained staff only.

Applications

- Western Blot (Transfected lysate)

Western blot analysis of Lane 1: Nontransfected 293 cell lysates (2 ug/lane), Lane 2: Transiently transfected 293 cell lysates (2 ug/lane) with MAP1LC3B polyclonal antibody (Cat # PAB29556) at 1:1000 dilution.

- Immunohistochemistry (Formalin/PFA-fixed paraffin-embedded sections)

- Immunofluorescence

Immunofluorescent staining of Chloroquine (50 uM, 16h) treated (A) and untreated (B) U251 cells with MAP1LC3B polyclonal antibody (Cat # PAB29556) at 1:100 dilution.

Gene Info — MAP1LC3B

Entrez GeneID	81631
Gene Name	MAP1LC3B
Gene Alias	LC3B, MAP1A/1BLC3
Gene Description	microtubule-associated protein 1 light chain 3 beta
Gene Ontology	Hyperlink
Gene Summary	The product of this gene is a subunit of neuronal microtubule-associated MAP1A and MAP1B proteins, which are involved in microtubule assembly and important for neurogenesis. Studies on the rat homolog implicate a role for this gene in autophagy, a process that involves the bulk degradation of cytoplasmic component. [provided by RefSeq]

Other Designationsmicrotubule-associated proteins 1A/1B light chain 3
