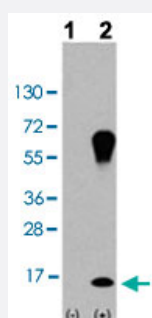


MAP1LC3A polyclonal antibody

Catalog # PAB29555

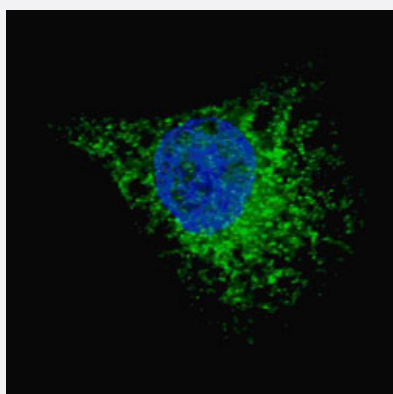
Size 400 uL

Applications



Western Blot (Transfected lysate)

Western blot analysis of Lane 1: Nontransfected 293 cell lysates (2 ug/lane), Lane 2: Transiently transfected 293 cell lysates (2 ug/lane) with MAP1LC3A polyclonal antibody (Cat # PAB29555) at 1:1000 dilution.



Immunofluorescence

Immunofluorescent staining of Chloroquine (50 uM, 16h) treated U251 cells with MAP1LC3A polyclonal antibody (Cat # PAB29555) shows positivity in cytoplasmic autophagic vacuoles at 1:200 dilution.

Specification

Product Description	Rabbit polyclonal antibody raised against full length recombinant human MAP1LC3A.
Immunogen	Recombinant protein corresponding to full length human MAP1LC3A.
Host	Rabbit
Theoretical MW (kDa)	14.3
Reactivity	Human
Form	Liquid

Purification	Ammonium sulfate precipitation
Isotype	Ig
Recommend Usage	Immunofluorescence (1:200) Western Blot (1:1000) The optimal working dilution should be determined by the end user.
Storage Buffer	In PBS (0.09% sodium azide)
Storage Instruction	Store at 4°C. For long term storage store at -20°C. Aliquot to avoid repeated freezing and thawing.
Note	This product contains sodium azide: a POISONOUS AND HAZARDOUS SUBSTANCE which should be handled by trained staff only.

Applications

- Western Blot (Transfected lysate)

Western blot analysis of Lane 1: Nontransfected 293 cell lysates (2 ug/lane), Lane 2: Transiently transfected 293 cell lysates (2 ug/lane) with MAP1LC3A polyclonal antibody (Cat # PAB29555) at 1:1000 dilution.

- Immunofluorescence

Immunofluorescent staining of Chloroquine (50 uM, 16h) treated U251 cells with MAP1LC3A polyclonal antibody (Cat # PAB29555) shows positivity in cytoplasmic autophagic vacuoles at 1:200 dilution.

Gene Info — MAP1LC3A

Entrez GeneID	84557
Gene Name	MAP1LC3A
Gene Alias	LC3, LC3A, MAP1ALC3, MAP1BLC3
Gene Description	microtubule-associated protein 1 light chain 3 alpha
Omim ID	601242
Gene Ontology	Hyperlink
Gene Summary	MAP1A and MAP1B are microtubule-associated proteins which mediate the physical interactions between microtubules and components of the cytoskeleton. MAP1A and MAP1B each consist of a heavy chain subunit and multiple light chain subunits. The protein encoded by this gene is one of the light chain subunits and can associate with either MAP1A or MAP1B. Two transcript variants encoding different isoforms have been found for this gene. [provided by RefSeq]

Other Designations

MAP1 light chain 3-like protein 1|MAP1A/1B light chain 3 A|MAP1A/MAP1B LC3 A|OTTHUMP0000030696|OTTHUMP00000030697|OTTHUMP00000030698|microtubule-associated proteins 1A/1B light chain 3
