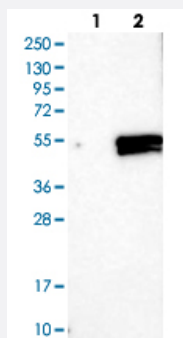


ELF3 polyclonal antibody

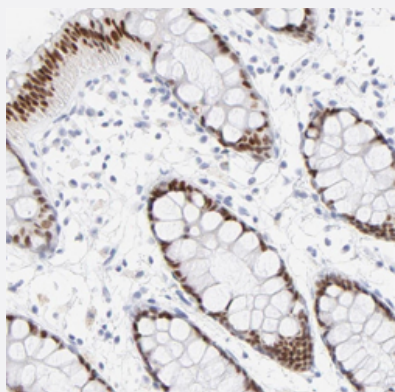
Catalog # PAB29549 Size 100 uL

Applications



Western Blot (Transfected lysate)

Western blot analysis of Lane 1: Negative control (vector only transfected HEK293T lysate), Lane 2: Over-expression lysate (Co-expressed with a C-terminal myc-DDK tag (~3.1 kDa) in mammalian HEK293T cells) with ELF3 polyclonal antibody (Cat # PAB29549).



Immunohistochemistry (Formalin/PFA-fixed paraffin-embedded sections)

Immunohistochemical staining of human rectum with ELF3 polyclonal antibody (Cat # PAB29549) shows strong nuclear positivity in glandular cells.

Specification

Product Description	Rabbit polyclonal antibody raised against recombinant human ELF3.
Immunogen	Recombinant protein corresponding to human ELF3.
Sequence	ATCEISNIFSNYFSAMYSSDSTLASVPPAATFGADDLVLTLSNPQMSLEGTEKASWLGEQPQFW SKTQVLDWISYQVEKNKYDASAIIDFSRCDMDGATLCNCALEELRLVFGPLGDQLHAQLRDLTSSS SDELSWIIELLEKDGMA
Host	Rabbit
Reactivity	Human

Form	Liquid
Purification	Antigen affinity purification
Isotype	IgG
Recommend Usage	Immunohistochemistry (1:50-1:200) Western Blot (1:100-1:250) The optimal working dilution should be determined by the end user.
Storage Buffer	In PBS, pH 7.2 (40% glycerol, 0.02% sodium azide)
Storage Instruction	Store at 4°C. For long term storage store at -20°C. Aliquot to avoid repeated freezing and thawing.
Note	This product contains sodium azide: a POISONOUS AND HAZARDOUS SUBSTANCE which should be handled by trained staff only.

Applications

- Western Blot (Transfected lysate)

Western blot analysis of Lane 1: Negative control (vector only transfected HEK293T lysate), Lane 2: Over-expression lysate (Co-expressed with a C-terminal myc-DDK tag (~3.1 kDa) in mammalian HEK293T cells) with ELF3 polyclonal antibody (Cat # PAB29549).

- Immunohistochemistry (Formalin/PFA-fixed paraffin-embedded sections)

Immunohistochemical staining of human rectum with ELF3 polyclonal antibody (Cat # PAB29549) shows strong nuclear positivity in glandular cells.

Gene Info — ELF3

Entrez GeneID	1999
Gene Name	ELF3
Gene Alias	EPR-1, ERT, ESE-1, ESX
Gene Description	E74-like factor 3 (ets domain transcription factor, epithelial-specific)
Omim ID	602191
Gene Ontology	Hyperlink
Gene Summary	O

Other Designations

E74-like factor 3 (ETS domain transcription factor, serine box, epithelial-specific)|E74-like factor 3 (ets domain transcription factor)|OTTHUMP00000034050|OTTHUMP00000034051|epithelial-restricted with serine box|epithelium-restricted Ets protein ESX|ets
