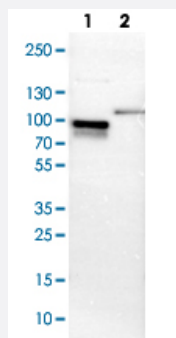


# SH3KBP1 polyclonal antibody

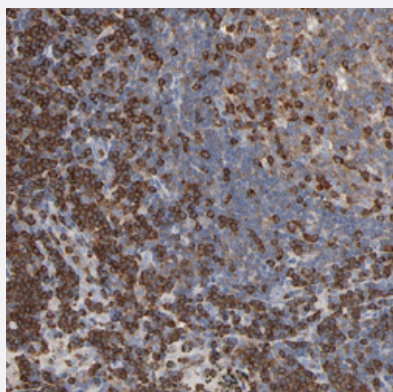
Catalog # PAB29542      Size 100 uL

## Applications



### Western Blot (Cell lysate)

Western blot analysis of Lane 1: NIH-3T3 cell lysate (Mouse embryonic fibroblast cells), Lane 2: NBT-II cell lysate (Rat Wistar bladder tumour cells) with SH3KBP1 polyclonal antibody (Cat # PAB29542).



### Immunohistochemistry (Formalin/PFA-fixed paraffin-embedded sections)

Immunohistochemical staining of human lymph node with SH3KBP1 polyclonal antibody (Cat # PAB29542) shows strong cytoplasmic positivity.

## Specification

<b>Product Description</b>	Rabbit polyclonal antibody raised against recombinant human SH3KBP1.
<b>Immunogen</b>	Recombinant protein corresponding to human SH3KBP1.
<b>Sequence</b>	WEGVLNGKTGMFPSNFIKELSGESDELGISQDEQLSKSSLRETTGSESDGGDSSSTKSEGANGT VATAAIQPKKVKGVGFGDIFKDKPIKLRPRSIEVENDFLPVEKTIGKKLPATTATPDSSKTEMDSRT KSKDY
<b>Host</b>	Rabbit
<b>Reactivity</b>	Human, Mouse

Form	Liquid
Purification	Antigen affinity purification
Isotype	IgG
Recommend Usage	Immunohistochemistry (1:50-1:200) Western Blot (1:100-1:250) The optimal working dilution should be determined by the end user.
Storage Buffer	In PBS, pH 7.2 (40% glycerol, 0.02% sodium azide)
Storage Instruction	Store at 4°C. For long term storage store at -20°C. Aliquot to avoid repeated freezing and thawing.
Note	This product contains sodium azide: a POISONOUS AND HAZARDOUS SUBSTANCE which should be handled by trained staff only.

## Applications

- Western Blot (Cell lysate)

Western blot analysis of Lane 1: NIH-3T3 cell lysate (Mouse embryonic fibroblast cells), Lane 2: NBT-II cell lysate (Rat Wistar bladder tumour cells) with SH3KBP1 polyclonal antibody (Cat # PAB29542).

- Immunohistochemistry (Formalin/PFA-fixed paraffin-embedded sections)

Immunohistochemical staining of human lymph node with SH3KBP1 polyclonal antibody (Cat # PAB29542) shows strong cytoplasmic positivity.

## Gene Info — SH3KBP1

Entrez GeneID	<a href="#">30011</a>
Gene Name	SH3KBP1
Gene Alias	CIN85, GIG10, MIG18
Gene Description	SH3-domain kinase binding protein 1
Omim ID	<a href="#">300374</a>
Gene Ontology	<a href="#">Hyperlink</a>

**Gene Summary**

CBL (MIM 165360) constitutively interacts with SH3 domain-containing proteins and, upon tyrosine phosphorylation, with SH2 domain-containing proteins. The SH3KBP1 gene encodes an 85-kD CBL-interacting protein that enhances tumor necrosis factor (MIM 191160)-mediated apoptotic cell death (Narita et al., 2001 [PubMed 11474197]).[supplied by OMIM]

**Other Designations**

OTTHUMP00000023022|OTTHUMP00000023024|OTTHUMP00000061480|c-Cbl-interacting protein|migration-inducing gene 18 protein

**Pathway**

- [Endocytosis](#)