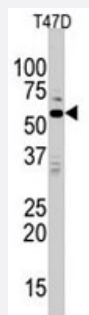


MAPK15 polyclonal antibody

Catalog # PAB2954

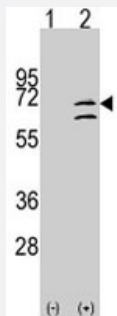
Size 400 uL

Applications



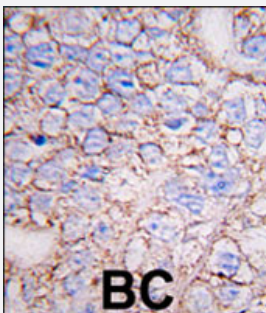
Western Blot (Cell lysate)

Western blot analysis of MAPK15 polyclonal antibody (Cat # PAB2954) in T-47D cell line lysates (35 ug/lane). MAPK15 (arrow) was detected using the purified polyclonal antibody.



Western Blot (Transfected lysate)

Western blot analysis of MAPK15 (arrow) using rabbit MAPK15 polyclonal antibody (Cat # PAB2954). 293 cell lysates (2 ug/lane) either nontransfected (Lane 1) or transiently transfected with the MAPK15 gene (Lane 2) (Origene Technologies).



Immunohistochemistry (Formalin/PFA-fixed paraffin-embedded sections)

Formalin-fixed and paraffin-embedded human breast carcinoma tissue reacted with MAPK15 polyclonal antibody (Cat # PAB2954), which was peroxidase-conjugated to the secondary antibody, followed by DAB staining. This data demonstrates the use of this antibody for immunohistochemistry; clinical relevance has not been evaluated.

Specification

Product Description

Rabbit polyclonal antibody raised against synthetic peptide of MAPK15.

Immunogen

A synthetic peptide (conjugated with KLH) corresponding to N-terminus of human MAPK15.

Host	Rabbit
Reactivity	Human
Form	Liquid
Purification	Protein A purification
Recommend Usage	Western Blot (1:1000) Immunohistochemistry (1:10-50) The optimal working dilution should be determined by the end user.
Storage Buffer	In PBS (0.09% sodium azide)
Storage Instruction	Store at 4°C. For long term storage store at -20°C. Aliquot to avoid repeated freezing and thawing.
Note	This product contains sodium azide: a POISONOUS AND HAZARDOUS SUBSTANCE which should be handled by trained staff only.

Applications

- Western Blot (Cell lysate)

Western blot analysis of MAPK15 polyclonal antibody (Cat # PAB2954) in T-47D cell line lysates (35 ug/lane). MAPK15 (arrow) was detected using the purified polyclonal antibody.

- Western Blot (Transfected lysate)

Western blot analysis of MAPK15 (arrow) using rabbit MAPK15 polyclonal antibody (Cat # PAB2954). 293 cell lysates (2 ug/lane) either nontransfected (Lane 1) or transiently transfected with the MAPK15 gene (Lane 2) (Origene Technologies).

- Immunohistochemistry (Formalin/PFA-fixed paraffin-embedded sections)

Formalin-fixed and paraffin-embedded human breast carcinoma tissue reacted with MAPK15 polyclonal antibody (Cat # PAB2954), which was peroxidase-conjugated to the secondary antibody, followed by DAB staining. This data demonstrates the use of this antibody for immunohistochemistry; clinical relevance has not been evaluated.

Gene Info — MAPK15

Entrez GeneID	225689
Protein Accession#	NP_620590;Q8TD08
Gene Name	MAPK15
Gene Alias	ERK7, ERK8

Gene Description	mitogen-activated protein kinase 15
Gene Ontology	Hyperlink
Other Designations	OTTHUMP00000189334 extracellular regulated kinase 8 delta extracellular signal regulated kinase 8 extracellular signal-regulated kinase 8

Publication Reference

- [ERK8 down-regulates transactivation of the glucocorticoid receptor through Hic-5.](#)

Saelzler MP, Spackman CC, Liu Y, Martinez LC, Harris JP, Abe MK.

The Journal of Biological Chemistry 2006 Jun; 281(24):16821.

Application: IHC-P, Human, Human lung

- [Activation of the Erk8 mitogen-activated protein \(MAP\) kinase by RET/PTC3, a constitutively active form of the RET proto-oncogene.](#)

Iavarone C, Acunzo M, Carlomagno F, Catania A, Melillo RM, Carlomagno SM, Santoro M, Chiariello M.

The Journal of Biological Chemistry 2006 Feb; 281(15):10567.

- [Characterization of the reversible phosphorylation and activation of ERK8.](#)

Klevernic IV, Stafford MJ, Morrice N, Peggie M, Morton S, Cohen P.

The Biochemical Journal 2006 Feb; 394(Pt 1):365.