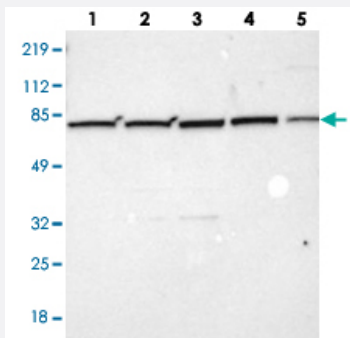


# ZC3H12B polyclonal antibody

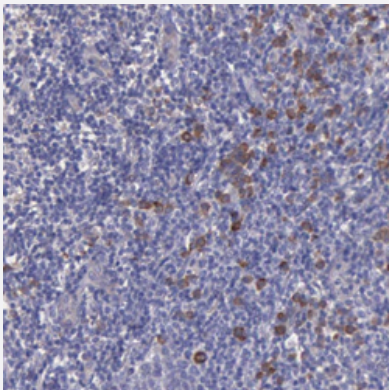
Catalog # PAB29510      Size 100 uL

## Applications



### Western Blot (Cell lysate)

Western blot analysis of Lane 1: Human cell line RT-4, Lane 2: Human cell line U-251MG sp, Lane 3: Human cell line A-431, Lane 4: Human liver tissue, Lane 5: Human tonsil tissue with ZC3H12B polyclonal antibody (Cat # PAB29510).



### Immunohistochemistry (Formalin/PFA-fixed paraffin-embedded sections)

Immunohistochemical staining of human tonsil with ZC3H12B polyclonal antibody (Cat # PAB29510) shows distinct cytoplasmic positivity in subsets of cells.

## Specification

Product Description	Rabbit polyclonal antibody raised against recombinant human ZC3H12B.
Immunogen	Recombinant protein corresponding to human ZC3H12B.
Sequence	GRALVMTRMDSISDSRLYESNPVRQRRPPLCREQHASWDPLPCTTDSYGYHSYPLSNSLMQPCY EPVMVRSVPKEKMEQLWRNPWWGMCNDSREHMIPEHQYQTYKNLCN
Host	Rabbit
Reactivity	Human

Form	Liquid
Purification	Antigen affinity purification
Isotype	IgG
Recommend Usage	Immunohistochemistry (1:50-1:200) Western Blot (1:250-1:500) The optimal working dilution should be determined by the end user.
Storage Buffer	In PBS, pH 7.2 (40% glycerol, 0.02% sodium azide)
Storage Instruction	Store at 4°C. For long term storage store at -20°C. Aliquot to avoid repeated freezing and thawing.
Note	This product contains sodium azide: a POISONOUS AND HAZARDOUS SUBSTANCE which should be handled by trained staff only.

## Applications

- Western Blot (Cell lysate)

Western blot analysis of Lane 1: Human cell line RT-4, Lane 2: Human cell line U-251MG sp, Lane 3: Human cell line A-431, Lane 4: Human liver tissue, Lane 5: Human tonsil tissue with ZC3H12B polyclonal antibody (Cat # PAB29510).

- Immunohistochemistry (Formalin/PFA-fixed paraffin-embedded sections)

Immunohistochemical staining of human tonsil with ZC3H12B polyclonal antibody (Cat # PAB29510) shows distinct cytoplasmic positivity in subsets of cells.

## Gene Info — ZC3H12B

Entrez GeneID	<a href="#">340554</a>
Gene Name	ZC3H12B
Gene Alias	CXorf32, MCPIP2
Gene Description	zinc finger CCCH-type containing 12B
Gene Ontology	<a href="#">Hyperlink</a>
Other Designations	MCP induced protein 2 MCP-induced protein 2