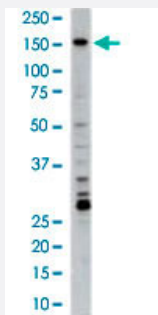


PRPF4B polyclonal antibody

Catalog # PAB2951

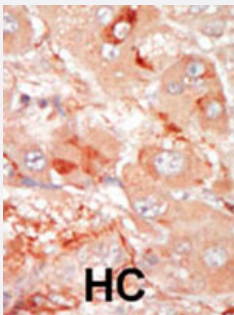
Size 400 uL

Applications



Western Blot (Cell lysate)

Western blot analysis of PRPF4B polyclonal antibody (Cat # PAB2951) in Jurkat cell lysate. PRPF4B (arrow) was detected using purified polyclonal antibody. Secondary HRP-anti-rabbit was used for signal visualization with chemiluminescence.



Immunohistochemistry (Formalin/PFA-fixed paraffin-embedded sections)

Formalin-fixed and paraffin-embedded human hepatocellular carcinoma tissue reacted with the PRPF4B polyclonal antibody (Cat # PAB2951), which was peroxidase-conjugated to the secondary antibody, followed by DAB staining. This data demonstrates the use of this antibody for immunohistochemistry; clinical relevance has not been evaluated. HC = hepatocarcinoma.

Specification

Product Description	Rabbit polyclonal antibody raised against synthetic peptide of PRPF4B.
Immunogen	A synthetic peptide (conjugated with KLH) corresponding to C-terminus of human PRPF4B.
Host	Rabbit
Reactivity	Human
Form	Liquid
Purification	Protein G purification

Recommend Usage	Western Blot (1:1000) Immunohistochemistry (1:50-100) The optimal working dilution should be determined by the end user.
Storage Buffer	In PBS (0.09% sodium azide)
Storage Instruction	Store at 4°C. For long term storage store at -20°C. Aliquot to avoid repeated freezing and thawing.
Note	This product contains sodium azide: a POISONOUS AND HAZARDOUS SUBSTANCE which should be handled by trained staff only.

Applications

- Western Blot (Cell lysate)

Western blot analysis of PRPF4B polyclonal antibody (Cat # PAB2951) in Jurkat cell lysate. PRPF4B (arrow) was detected using purified polyclonal antibody. Secondary HRP-anti-rabbit was used for signal visualization with chemiluminescence.

- Immunohistochemistry (Formalin/PFA-fixed paraffin-embedded sections)

Formalin-fixed and paraffin-embedded human hepatocellular carcinoma tissue reacted with the PRPF4B polyclonal antibody (Cat # PAB2951), which was peroxidase-conjugated to the secondary antibody, followed by DAB staining. This data demonstrates the use of this antibody for immunohistochemistry; clinical relevance has not been evaluated. HC = hepatocarcinoma.

Gene Info — PRPF4B

Entrez GeneID	8899
Protein Accession#	NP_789770:Q13523
Gene Name	PRPF4B
Gene Alias	KIAA0536, PR4H, PRP4, PRP4H, PRP4K, dJ1013A10.1
Gene Description	PRP4 pre-mRNA processing factor 4 homolog B (yeast)
Omim ID	602338
Gene Ontology	Hyperlink
Gene Summary	Pre-mRNA splicing occurs in two sequential transesterification steps, and the protein encoded by this gene is thought to be involved in pre-mRNA splicing and in signal transduction. This protein belongs to a kinase family that includes serine/arginine-rich protein-specific kinases and cyclin-dependent kinases (CDKs). This protein is regarded as a CDK-like kinase (Clk) with homology to mitogen-activated protein kinases (MAPKs). [provided by RefSeq]

Other Designations

OTTHUMP00000039176|dJ1013A10.1 (PRP4 protein kinase homolog)|protein-serine/threonine kinase|serine/threonine-protein kinase PRP4 homolog|serine/threonine-protein kinase PRP4K

Publication Reference

- [PRP4 is a spindle assembly checkpoint protein required for MPS1, MAD1, and MAD2 localization to the kinetochores.](#)

Montembault E, Dutertre S, Prigent C, Giet R.

The Journal of Cell Biology 2007 Nov; 179(4):601.

Application: IF, WB-Tr, Human, HeLa cells

Disease

- [Kidney Failure](#)