

## FKBP2 polyclonal antibody

Catalog # PAB29504

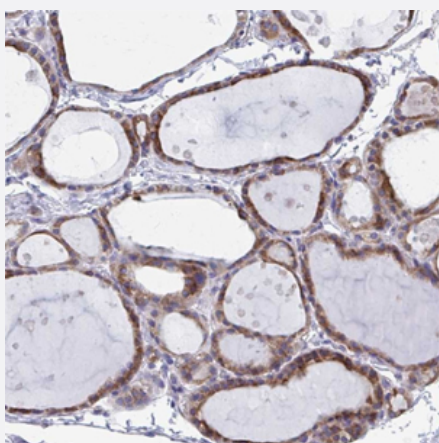
Size 100  $\mu$ L

### Applications



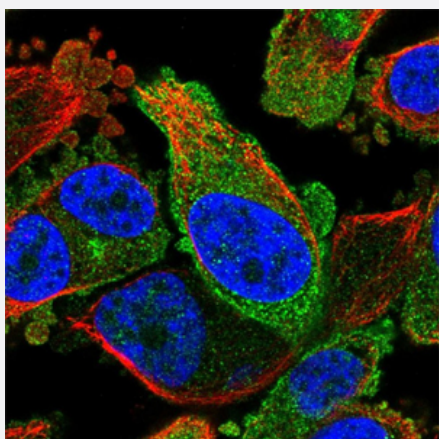
#### Western Blot (Cell lysate)

Western Blot (Cell lysate) analysis of RT-4 cell lysate with FKBP2 polyclonal antibody (Cat# PAB29504) at 1:250 - 1:500 dilution.



#### Immunohistochemistry (Formalin/PFA-fixed paraffin-embedded sections)

Immunohistochemical staining (Formalin-fixed paraffin-embedded sections) of human thyroid gland with FKBP2 polyclonal antibody (Cat# PAB29504) shows moderate cytoplasmic positivity in glandular cells at 1:500 - 1:1000 dilution.



#### Immunofluorescence

Immunofluorescent staining of PC-3 cells with FKBP2 polyclonal antibody (Cat# PAB29504) under 1-4  $\mu$ g/mL working concentration shows positivity in plasma membrane. Antibody staining is shown in green.

## Specification

<b>Product Description</b>	FKBP2 polyclonal antibody raised against recombinant human FKBP2.
<b>Immunogen</b>	Recombinant protein corresponding to amino acids of human FKBP2.
<b>Sequence</b>	RKLQIGVKKRVDHCPIKSRKGDVLHMHYT
<b>Host</b>	Rabbit
<b>Reactivity</b>	Human
<b>Form</b>	Liquid
<b>Purification</b>	Antigen affinity purification
<b>Isotype</b>	IgG
<b>Recommend Usage</b>	Immunofluorescence (1-4 ug/mL) Immunohistochemistry (1:500-1:1000) Western Blot (1:250-1:500) The optimal working dilution should be determined by the end user.
<b>Storage Buffer</b>	In PBS, pH 7.2 (40% glycerol, 0.02% sodium azide)
<b>Storage Instruction</b>	Store at 4°C. For long term storage store at -20°C. Aliquot to avoid repeated freezing and thawing.
<b>Note</b>	This product contains sodium azide: a POISONOUS AND HAZARDOUS SUBSTANCE which should be handled by trained staff only.

## Applications

- Western Blot (Cell lysate)

Western Blot (Cell lysate) analysis of RT-4 cell lysate with FKBP2 polyclonal antibody (Cat# PAB29504) at 1:250 - 1:500 dilution.

- Immunohistochemistry (Formalin/PFA-fixed paraffin-embedded sections)

Immunohistochemical staining (Formalin-fixed paraffin-embedded sections) of human thyroid gland with FKBP2 polyclonal antibody (Cat# PAB29504) shows moderate cytoplasmic positivity in glandular cells at 1:500 - 1:1000 dilution.

- Immunofluorescence

Immunofluorescent staining of PC-3 cells with FKBP2 polyclonal antibody (Cat# PAB29504) under 1-4 ug/mL working concentration shows positivity in plasma membrane. Antibody staining is shown in green.

## Gene Info — FKBP2

**Entrez GeneID** [2286](#)**Protein Accession#** [P26885](#)**Gene Name** FKBP2**Gene Alias** FKBP-13, PPlase**Gene Description** FK506 binding protein 2, 13kDa**Omim ID** [186946](#)**Gene Ontology** [Hyperlink](#)

**Gene Summary**

The protein encoded by this gene is a member of the immunophilin protein family, which play a role in immunoregulation and basic cellular processes involving protein folding and trafficking. This encoded protein is a cis-trans prolyl isomerase that binds the immunosuppressants FK506 and rapamycin. It is thought to function as an ER chaperone and may also act as a component of membrane cytoskeletal scaffolds. Multiple alternatively spliced variants, encoding the same protein, have been identified. [provided by RefSeq]

**Other Designations** FK506 binding protein 2 (13kD)|FK506-binding protein 2 (13kD)|peptidyl-prolyl cis-trans isomerase|proline isomerase|rapamycin-binding protein

## Disease

- [Cardiovascular Diseases](#)
- [Diabetes Mellitus](#)
- [Edema](#)