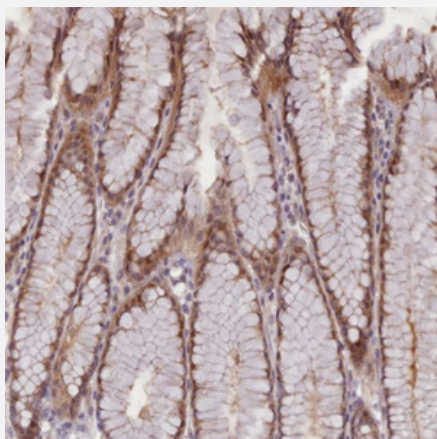


CDC6 polyclonal antibody

Catalog # PAB29498

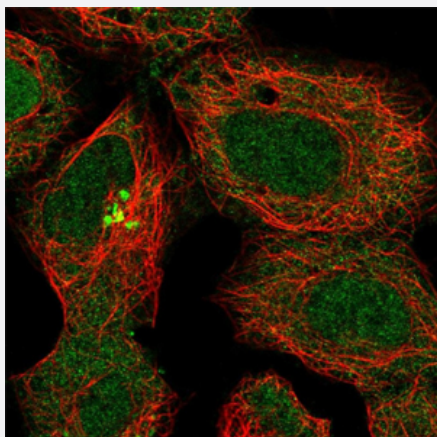
Size 100 uL

Applications



Immunohistochemistry (Formalin/PFA-fixed paraffin-embedded sections)

Immunohistochemical staining (Formalin-fixed paraffin-embedded sections) of human stomach with CDC6 polyclonal antibody (Cat# PAB29498) shows moderate cytoplasmic and nuclear positivity in glandular cells.



Immunofluorescence

Immunofluorescent staining of HEK-293 cells with CDC6 polyclonal antibody (Cat# PAB29498) under 1-4 ug/mL working concentration shows positivity in cytoplasm, the Golgi apparatus and nucleus but excluded from the nucleoli. Antibody staining is shown in green.

Specification

Product Description

CDC6 polyclonal antibody raised against recombinant human CDC6.

Immunogen

Recombinant protein corresponding to amino acids of human CDC6.

Sequence

CQEEVSRPAGKDMMRKLEKHMATAEKGPIMVLVLDEMDQLDSKGQDVLYTLFEWPWLSNSHLVL
IGIANTLDLTDRILPRLQAREKCKPQLLNFPF

Host	Rabbit
Reactivity	Human
Form	Liquid
Purification	Antigen affinity purification
Isotype	IgG
Recommend Usage	Immunofluorescence (1-4 ug/mL) Immunohistochemistry (1:10-1:20) The optimal working dilution should be determined by the end user.
Storage Buffer	In PBS, pH 7.2 (40% glycerol, 0.02% sodium azide)
Storage Instruction	Store at 4°C. For long term storage store at -20°C. Aliquot to avoid repeated freezing and thawing.
Note	This product contains sodium azide: a POISONOUS AND HAZARDOUS SUBSTANCE which should be handled by trained staff only.

Applications

- Immunohistochemistry (Formalin/PFA-fixed paraffin-embedded sections)

Immunohistochemical staining (Formalin-fixed paraffin-embedded sections) of human stomach with CDC6 polyclonal antibody (Cat# PAB29498) shows moderate cytoplasmic and nuclear positivity in glandular cells.

- Immunofluorescence

Immunofluorescent staining of HEK-293 cells with CDC6 polyclonal antibody (Cat# PAB29498) under 1-4 ug/mL working concentration shows positivity in cytoplasm, the Golgi apparatus and nucleus but excluded from the nucleoli. Antibody staining is shown in green.

Gene Info — CDC6

Entrez GeneID	990
Protein Accession#	Q99741
Gene Name	CDC6
Gene Alias	CDC18L, HsCDC18, HsCDC6
Gene Description	cell division cycle 6 homolog (S. cerevisiae)
Omim ID	602627

Gene Ontology

[Hyperlink](#)

Gene Summary

The protein encoded by this gene is highly similar to *Saccharomyces cerevisiae* Cdc6, a protein essential for the initiation of DNA replication. This protein functions as a regulator at the early steps of DNA replication. It localizes in cell nucleus during cell cycle G1, but translocates to the cytoplasm at the start of S phase. The subcellular translocation of this protein during cell cycle is regulated through its phosphorylation by Cdks. Transcription of this protein was reported to be regulated in response to mitogenic signals through transcriptional control mechanism involving E2F proteins. [provided by RefSeq]

Other Designations

CDC18 (cell division cycle 18, *S.pombe*, homolog)-like|CDC6 cell division cycle 6 homolog|CDC6-related protein|cell division cycle 6 protein

Pathway

- [Cell cycle](#)

Disease

- [Carcinoma](#)
- [Genetic Predisposition to Disease](#)
- [Kidney Failure](#)
- [Liver Neoplasms](#)
- [Lymphoma](#)
- [Pulmonary Disease](#)
- [Uterine Cervical Neoplasms](#)