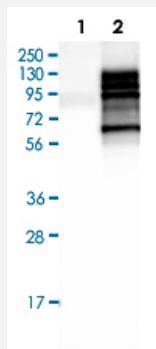


SLC3A2 polyclonal antibody

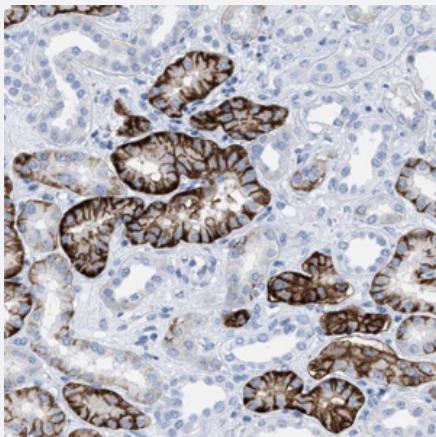
Catalog # PAB29491 Size 100 uL

Applications



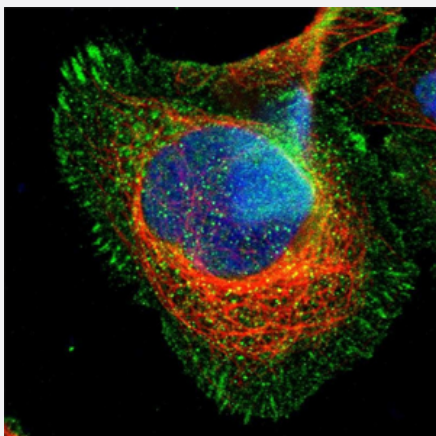
Western Blot (Cell lysate)

Western Blot (Cell lysate) analysis of Lane 1: Negative control (vector only transfected HEK293T lysate), Lane 2: Over-expression lysate (Co-expressed with a C-terminal myc-DDK tag (~3.1 kDa) in mammalian HEK293T cells) with SLC3A2 polyclonal antibody (Cat# PAB29491) at 1:100 - 1:250 dilution.



Immunohistochemistry (Formalin/PFA-fixed paraffin-embedded sections)

Immunohistochemical staining (Formalin-fixed paraffin-embedded sections) of human kidney with SLC3A2 polyclonal antibody (Cat# PAB29491) shows strong membranous positivity in tubular cells at 1:2500 - 1:5000 dilution.



Immunofluorescence

Immunofluorescent staining of U-2 OS cells with SLC3A2 polyclonal antibody (Cat# PAB29491) under 1-4 ug/mL working concentration shows positivity in nucleus, plasma membrane and cytoplasm. Antibody staining is shown in green.

Specification

Product Description	SLC3A2 polyclonal antibody raised against recombinant human SLC3A2.
Immunogen	Recombinant protein corresponding to amino acids of human SLC3A2.
Sequence	KGRLDYSSLKVKGLVLGPIHKNQKDDVAQTDLLQIDPNFGSKEDFDSLLQSAKKKSIRVILDLT TPN YRGNSWFSTQVDTVATKVKDALEFWLQAGVDGFGVRDIENLKDASSFLAEWQNITKGFSE DRL LIAGTNSSDL
Host	Rabbit
Reactivity	Human
Form	Liquid
Purification	Antigen affinity purification
Isotype	IgG
Recommend Usage	Immunofluorescence (1-4 ug/mL) Immunohistochemistry (1:2500-1:5000) Western Blot (1:100-1:250) The optimal working dilution should be determined by the end user.
Storage Buffer	In PBS, pH 7.2 (40% glycerol, 0.02% sodium azide)
Storage Instruction	Store at 4°C. For long term storage store at -20°C. Aliquot to avoid repeated freezing and thawing.
Note	This product contains sodium azide: a POISONOUS AND HAZARDOUS SUBSTANCE which should be handled by trained staff only.

Applications

- Western Blot (Cell lysate)

Western Blot (Cell lysate) analysis of Lane 1: Negative control (vector only transfected HEK293T lysate), Lane 2: Over-expression lysate (Co-expressed with a C-terminal myc-DDK tag (~3.1 kDa) in mammalian HEK293T cells) with SLC3A2 polyclonal antibody (Cat# PAB29491) at 1:100 - 1:250 dilution.

- Immunohistochemistry (Formalin/PFA-fixed paraffin-embedded sections)

Immunohistochemical staining (Formalin-fixed paraffin-embedded sections) of human kidney with SLC3A2 polyclonal antibody (Cat# PAB29491) shows strong membranous positivity in tubular cells at 1:2500 - 1:5000 dilution.

- Immunofluorescence

Immunofluorescent staining of U-2 OS cells with SLC3A2 polyclonal antibody (Cat# PAB29491) under 1-4 ug/mL working concentration shows positivity in nucleus, plasma membrane and cytoplasm. Antibody staining is shown in green.

Gene Info — SLC3A2

Entrez GeneID	6520
Protein Accession#	P08195
Gene Name	SLC3A2
Gene Alias	4F2, 4F2HC, 4T2HC, CD98, CD98HC, MDU1, NACAE
Gene Description	solute carrier family 3 (activators of dibasic and neutral amino acid transport), member 2
Omim ID	158070
Gene Ontology	Hyperlink
Gene Summary	This gene is a member of the solute carrier family and encodes a cell surface, transmembrane protein with an alpha amylase domain. The protein exists as the heavy chain of a heterodimer, covalently bound through di-sulfide bonds to one of several possible light chains. It associates with integrins and mediates integrin-dependent signaling related to normal cell growth and tumorigenesis. Alternate transcriptional splice variants, encoding different isoforms, have been characterized. [provided by RefSeq]
Other Designations	4F2 cell-surface antigen heavy chain 4F2 heavy chain CD98 heavy chain antigen defined by monoclonal antibody 4F2, heavy chain antigen identified by monoclonal antibodies 4F2, TRA1.10, TROP4, and T43 heavy chain lymphocyte activation antigen 4F2 large subu

Disease

- [Cardiovascular Diseases](#)
- [Diabetes Mellitus](#)
- [Edema](#)
- [Lymphoma](#)
- [Multiple Myeloma](#)