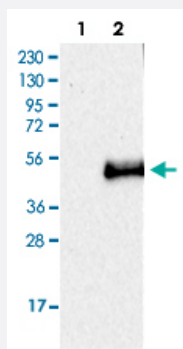


CD207 polyclonal antibody

Catalog # PAB29488

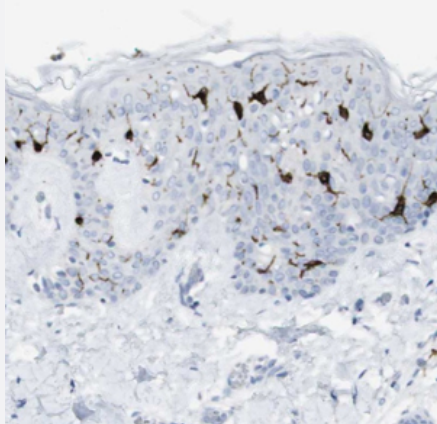
Size 100 uL

Applications



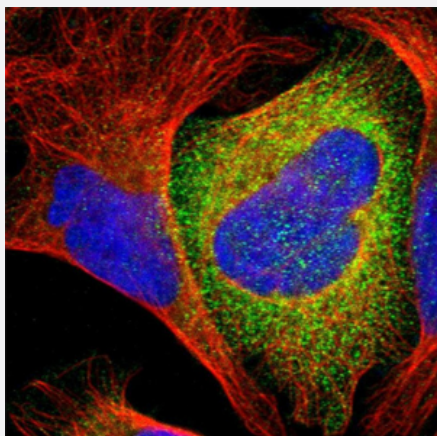
Western Blot (Cell lysate)

Western Blot (Cell lysate) analysis of Lane 1: Negative control (vector only transfected HEK293T lysate), Lane 2: Over-expression lysate (Co-expressed with a C-terminal myc-DDK tag (~3.1 kDa) in mammalian HEK293T cells) with CD207 polyclonal antibody (Cat# PAB29488) at 1:100 - 1:250 dilution.



Immunohistochemistry (Formalin/PFA-fixed paraffin-embedded sections)

Immunohistochemical staining (Formalin-fixed paraffin-embedded sections) of human skin with CD207 polyclonal antibody (Cat# PAB29488) shows distinct cytoplasmic positivity in a subset of cells that resembled Langerhans cells at 1:20 - 1:50 dilution.



Immunofluorescence

Immunofluorescent staining of U-2 OS cells with CD207 polyclonal antibody (Cat# PAB29488) under 1-4 ug/mL working concentration shows positivity in cytoplasm. Antibody staining is shown in green.

Specification

Product Description	CD207 polyclonal antibody raised against recombinant human CD207.
Immunogen	Recombinant protein corresponding to amino acids of human CD207.
Sequence	VKTNVQLLKGRVDNISTLDSEIKKNSDGMEAAGVQIQMVNESLGYVRSQFLKLKTSVEKANAEIQIL TRSWEEVSTLNAQIPELKSDLEKASALNTKIRALQGSLENMSKLLKRQNDILQVVSQGWKYFKGN FYYFSLIP
Host	Rabbit
Reactivity	Human
Form	Liquid
Purification	Antigen affinity purification
Isotype	IgG
Recommend Usage	Immunofluorescence (1-4 ug/mL) Immunohistochemistry (1:20-1:50) Western Blot (1:100-1:250) The optimal working dilution should be determined by the end user.
Storage Buffer	In PBS, pH 7.2 (40% glycerol, 0.02% sodium azide)
Storage Instruction	Store at 4°C. For long term storage store at -20°C. Aliquot to avoid repeated freezing and thawing.
Note	This product contains sodium azide: a POISONOUS AND HAZARDOUS SUBSTANCE which should be handled by trained staff only.

Applications

- Western Blot (Cell lysate)

Western Blot (Cell lysate) analysis of Lane 1: Negative control (vector only transfected HEK293T lysate), Lane 2: Over-expression lysate (Co-expressed with a C-terminal myc-DDK tag (~3.1 kDa) in mammalian HEK293T cells) with CD207 polyclonal antibody (Cat# PAB29488) at 1:100 - 1:250 dilution.

- Immunohistochemistry (Formalin/PFA-fixed paraffin-embedded sections)

Immunohistochemical staining (Formalin-fixed paraffin-embedded sections) of human skin with CD207 polyclonal antibody (Cat# PAB29488) shows distinct cytoplasmic positivity in a subset of cells that resembled Langerhans cells at 1:20 - 1:50 dilution.

- Immunofluorescence

Immunofluorescent staining of U-2 OS cells with CD207 polyclonal antibody (Cat# PAB29488) under 1-4 ug/mL working concentration shows positivity in cytoplasm. Antibody staining is shown in green.

Gene Info — CD207

Entrez GeneID	50489
---------------	-----------------------

Protein Accession#	Q9UJ71
--------------------	------------------------

Gene Name	CD207
-----------	-------

Gene Alias	CLEC4K
------------	--------

Gene Description	CD207 molecule, langerin
------------------	--------------------------

Omim ID	604862
---------	------------------------

Gene Ontology	Hyperlink
---------------	---------------------------

Gene Summary	The protein encoded by this gene is expressed only in Langerhans cells which are immature dendritic cells of the epidermis and mucosa. It is localized in the Birbeck granules, organelles present in the cytoplasm of Langerhans cells and consisting of superimposed and zippered membranes. It is a C-type lectin with mannose binding specificity, and it has been proposed that mannose binding by this protein leads to internalization of antigen into Birbeck granules and providing access to a nonclassical antigen-processing pathway. [provided by RefSeq]
--------------	--

Other Designations	C-type lectin domain family 4, member K CD207 antigen, langerin Langerhans cell specific c-type lectin
--------------------	--