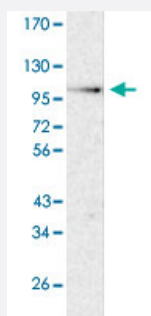


COPB1 polyclonal antibody

Catalog # PAB29484

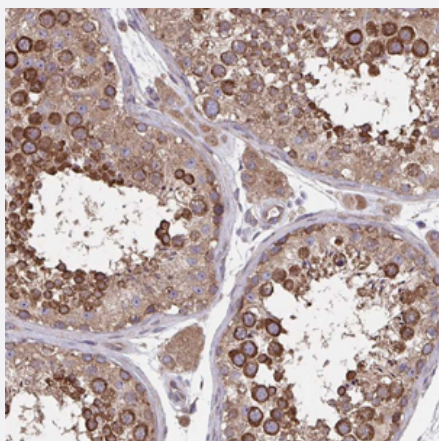
Size 100 uL

Applications



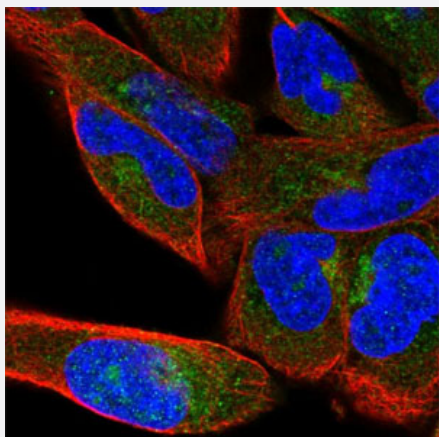
Western Blot (Cell lysate)

Western Blot (Cell lysate) analysis of RT-4 cell lysate with COPB1 polyclonal antibody (Cat# PAB29484) at 1:100 - 1:250 dilution.



Immunohistochemistry (Formalin/PFA-fixed paraffin-embedded sections)

Immunohistochemical staining (Formalin-fixed paraffin-embedded sections) of human testis with COPB1 polyclonal antibody (Cat# PAB29484) shows cytoplasmic positivity in cells in seminiferous ducts at 1:20 - 1:50 dilution.



Immunofluorescence

Immunofluorescent staining of RH-30 cells with COPB1 polyclonal antibody (Cat# PAB29484) under 1-4 ug/mL working concentration shows positivity in cytoplasm and the Golgi apparatus. Antibody staining is shown in green.

Specification

Product Description	COPB1 polyclonal antibody raised against recombinant human COPB1.
Immunogen	Recombinant protein corresponding to amino acids of human COPB1.
Sequence	NKVTVNTNMVDLNDYLQHILKSTNMKCLTPEKALSGYCGFMAANLYARSIFGEDALANVSIEKPIHQ GPDAAVTGHIRIRAKSQGMALSLGDKINLSQKKT
Host	Rabbit
Reactivity	Human
Form	Liquid
Purification	Antigen affinity purification
Isotype	IgG
Recommend Usage	Immunofluorescence (1-4 ug/mL) Immunohistochemistry (1:20-1:50) Western Blot (1:100-1:250) The optimal working dilution should be determined by the end user.
Storage Buffer	In PBS, pH 7.2 (40% glycerol, 0.02% sodium azide)
Storage Instruction	Store at 4°C. For long term storage store at -20°C. Aliquot to avoid repeated freezing and thawing.
Note	This product contains sodium azide: a POISONOUS AND HAZARDOUS SUBSTANCE which should be handled by trained staff only.

Applications

- Western Blot (Cell lysate)

Western Blot (Cell lysate) analysis of RT-4 cell lysate with COPB1 polyclonal antibody (Cat# PAB29484) at 1:100 - 1:250 dilution.

- Immunohistochemistry (Formalin/PFA-fixed paraffin-embedded sections)

Immunohistochemical staining (Formalin-fixed paraffin-embedded sections) of human testis with COPB1 polyclonal antibody (Cat# PAB29484) shows cytoplasmic positivity in cells in seminiferous ducts at 1:20 - 1:50 dilution.

- Immunofluorescence

Immunofluorescent staining of RH-30 cells with COPB1 polyclonal antibody (Cat# PAB29484) under 1-4 ug/mL working concentration shows positivity in cytoplasm and the Golgi apparatus. Antibody staining is shown in green.

Gene Info — COPB1

Entrez GeneID [1315](#)**Protein Accession#** [P53618](#)**Gene Name** COPB1**Gene Alias** COPB, DKFZp761K102, FLJ10341**Gene Description** coatomer protein complex, subunit beta 1**Omim ID** [600959](#)**Gene Ontology** [Hyperlink](#)

Gene Summary This gene encodes a protein subunit of the coatomer complex associated with non-clathrin coated vesicles. The coatomer complex, also known as the coat protein complex 1, forms in the cytoplasm and is recruited to the Golgi by activated guanosine triphosphatases. Once at the Golgi membrane, the coatomer complex may assist in the movement of protein and lipid components back to the endoplasmic reticulum. Alternatively spliced transcript variants have been described. [provided by RefSeq]

Other Designations beta coat protein|coatomer protein complex, subunit beta