

CAND1 polyclonal antibody

Catalog # PAB29483

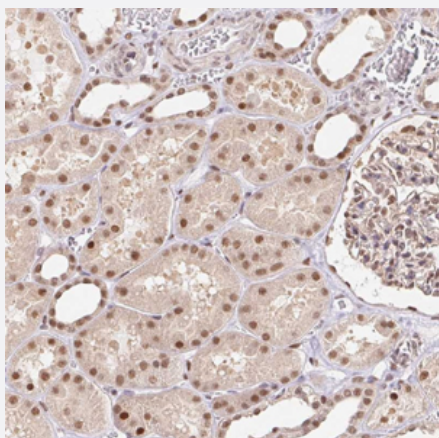
Size 100 uL

Applications



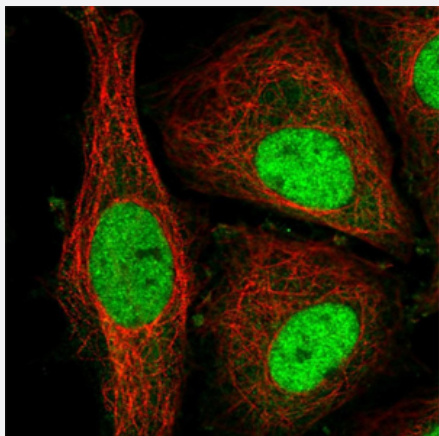
Western Blot

Western Blot analysis of Lane 1: RT-4 cell lysate, Lane 2: U-251 MG, Lane 3: Human plasma, Lane 4: Human Liver tissue, Lane 5: Human Tonsil tissue with CAND1 polyclonal antibody (Cat# PAB29483) at 1:100 - 1:250 dilution.



Immunohistochemistry (Formalin/PFA-fixed paraffin-embedded sections)

Immunohistochemical staining (Formalin-fixed paraffin-embedded sections) of human kidney with CAND1 polyclonal antibody (Cat# PAB29483) shows moderate cytoplasmic and nuclear positivity in renal tubules at 1:1000 - 1:2500 dilution.



Immunofluorescence

Immunofluorescent staining of SiHa cells with CAND1 polyclonal antibody (Cat# PAB29483) under 1-4 ug/mL working concentration shows positivity in nucleus but excluded from the nucleoli. Antibody staining is shown in green.

Specification

Product Description	CAND1 polyclonal antibody raised against recombinant human CAND1.
Immunogen	Recombinant protein corresponding to amino acids of human CAND1.
Sequence	QTRPVQSWLCDPDAMEQGETPLTMLQSQVPNIVKALHKQMKEKSVKTRQCCFNMLTELNVLP G
Host	Rabbit
Reactivity	Human
Form	Liquid
Purification	Antigen affinity purification
Isotype	IgG
Recommend Usage	Immunofluorescence (1-4 ug/mL) Immunohistochemistry (1:1000-1:2500) Western Blot (1:100-1:250) The optimal working dilution should be determined by the end user.
Storage Buffer	In PBS, pH 7.2 (40% glycerol, 0.02% sodium azide)
Storage Instruction	Store at 4°C. For long term storage store at -20°C. Aliquot to avoid repeated freezing and thawing.
Note	This product contains sodium azide: a POISONOUS AND HAZARDOUS SUBSTANCE which should be handled by trained staff only.

Applications

• Western Blot

Western Blot analysis of Lane 1: RT-4 cell lysate, Lane 2: U-251 MG, Lane 3: Human plasma, Lane 4: Human Liver tissue, Lane 5: Human Tonsil tissue with CAND1 polyclonal antibody (Cat# PAB29483) at 1:100 - 1:250 dilution.

• Immunohistochemistry (Formalin/PFA-fixed paraffin-embedded sections)

Immunohistochemical staining (Formalin-fixed paraffin-embedded sections) of human kidney with CAND1 polyclonal antibody (Cat# PAB29483) shows moderate cytoplasmic and nuclear positivity in renal tubules at 1:1000 - 1:2500 dilution.

• Immunofluorescence

Immunofluorescent staining of SiHa cells with CAND1 polyclonal antibody (Cat# PAB29483) under 1-4 ug/mL working concentration shows positivity in nucleus but excluded from the nucleoli. Antibody staining is shown in green.

Gene Info — CAND1

Entrez GeneID	55832
Protein Accession#	Q86VP6
Gene Name	CAND1
Gene Alias	DKFZp434M1414, FLJ10114, FLJ10929, FLJ38691, FLJ90441, KIAA0829, TIP120, TIP120A
Gene Description	cullin-associated and neddylation-dissociated 1
Omim ID	607727
Gene Ontology	Hyperlink
Other Designations	TBP interacting protein TBP-interacting protein TIP120 protein