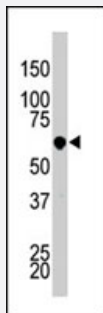


# PCTK3 polyclonal antibody

Catalog # PAB2948

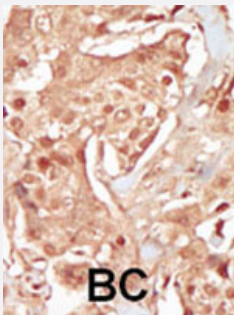
Size 400 uL

## Applications



### Western Blot (Cell lysate)

The PCTK3 polyclonal antibody (Cat # PAB2948) is used in Western blot to detect PCTK3 in HL-60 cell lysate.



### Immunohistochemistry (Formalin/PFA-fixed paraffin-embedded sections)

Formalin-fixed and paraffin-embedded human cancer tissue reacted with PCTK3 polyclonal antibody (Cat # PAB2948), which was peroxidase-conjugated to the secondary antibody, followed by DAB staining. This data demonstrates the use of this antibody for immunohistochemistry; clinical relevance has not been evaluated. BC = breast carcinoma.

## Specification

<b>Product Description</b>	Rabbit polyclonal antibody raised against synthetic peptide of PCTK3.
<b>Immunogen</b>	A synthetic peptide (conjugated with KLH) corresponding to N-terminus of human PCTK3.
<b>Host</b>	Rabbit
<b>Reactivity</b>	Human
<b>Form</b>	Liquid
<b>Purification</b>	Protein G purification

<b>Recommend Usage</b>	Western Blot (1:1000) Immunohistochemistry (1:50-100) The optimal working dilution should be determined by the end user.
<b>Storage Buffer</b>	In PBS (0.09% sodium azide)
<b>Storage Instruction</b>	Store at 4°C. For long term storage store at -20°C. Aliquot to avoid repeated freezing and thawing.
<b>Note</b>	This product contains sodium azide: a POISONOUS AND HAZARDOUS SUBSTANCE which should be handled by trained staff only.

## Applications

- Western Blot (Cell lysate)

The PCTK3 polyclonal antibody (Cat # PAB2948) is used in Western blot to detect PCTK3 in HL-60 cell lysate.

- Immunohistochemistry (Formalin/PFA-fixed paraffin-embedded sections)

Formalin-fixed and paraffin-embedded human cancer tissue reacted with PCTK3 polyclonal antibody (Cat # PAB2948), which was peroxidase-conjugated to the secondary antibody, followed by DAB staining. This data demonstrates the use of this antibody for immunohistochemistry; clinical relevance has not been evaluated. BC = breast carcinoma.

## Gene Info — PCTK3

<b>Entrez GeneID</b>	<a href="#">5129</a>
<b>Protein Accession#</b>	<a href="#">KPT3_HUMAN</a>
<b>Gene Name</b>	PCTK3
<b>Gene Alias</b>	PCTAIRE, PCTAIRE3
<b>Gene Description</b>	PCTAIRE protein kinase 3
<b>Omim ID</b>	<a href="#">169190</a>
<b>Gene Ontology</b>	<a href="#">Hyperlink</a>
<b>Other Designations</b>	-

## Publication Reference

- [Generation and initial analysis of more than 15,000 full-length human and mouse cDNA sequences.](#)

Strausberg RL, Feingold EA, Grouse LH, Derge JG, Klausner RD, Collins FS, Wagner L, Shenmen CM, Schuler GD, Altschul SF, Zeeberg B, Buetow KH, Schaefer CF, Bhat NK, Hopkins RF, Jordan H, Moore T, Max SI, Wang J, Hsieh F, Diatchenko L, Marusina K, Farmer AA, Rubin GM, Hong L, Stapleton M, Soares MB, Bonaldo MF, Casavant TL, Scheetz TE, Brownstein MJ, Ustin TB, Toshiyuki S, Caminci P, Prange C, Raha SS, Loquellano NA, Peters GJ, Abramson RD, Mullahy SJ, Bosak SA, McEwan PJ, McKernan KJ, Malek JA,

PNAS 2002 Dec; 99(26):16899.

- [A family of human cdc2-related protein kinases.](#)

Meyerson M, Enders GH, Wu CL, Su LK, Gorka C, Nelson C, Harlow E, Tsai LH.

The EMBO Journal 1992 Aug; 11(8):2909.