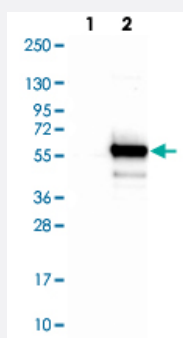


# TIPIN polyclonal antibody

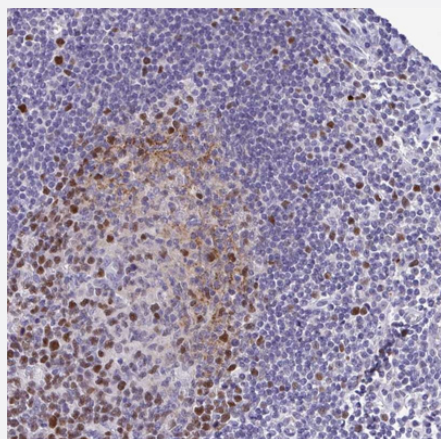
Catalog # PAB29474      Size 100 uL

## Applications



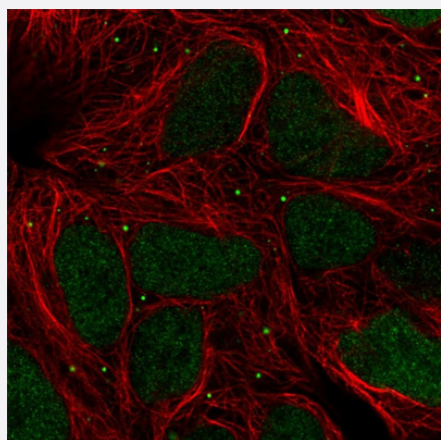
### Western Blot (Transfected lysate)

Western blot analysis of Lane 1: Negative control (vector only transfected HEK293T lysate) Lane 2: Over-expression lysate (Co-expressed with a C-terminal myc-DDK tag (~3.1 kDa) in mammalian HEK293T cells) with IFITM1 polyclonal antibody (Cat # PAB29474) at 1:500-1:1000 dilution.



### Immunohistochemistry (Formalin/PFA-fixed paraffin-embedded sections)

Immunohistochemical staining of human lymph node with IFITM1 polyclonal antibody (Cat # PAB29474) shows strong cytoplasmic positivity in lymphoid cells outside reaction centra at 1:200-1:500 dilution.



### Immunofluorescence

Immunofluorescent staining of human cell line HEK 293 with IFITM1 polyclonal antibody (Cat # PAB29474) at 1-4 ug/mL concentration shows positivity in nucleus and vesicles.

## Specification

<b>Product Description</b>	Rabbit polyclonal antibody raised against recombinant human TIPIN.
<b>Immunogen</b>	Recombinant protein corresponding to human TIPIN.
<b>Sequence</b>	HEAEDLKMLIRHMEHWAHRLFPKLQFEDFIDRVEYLGSKKEVQTCLKRIRLDLPILHEDFVSNNDE VAENNEHDVTSTELDPFLTNLSESEMFASELS
<b>Host</b>	Rabbit
<b>Reactivity</b>	Human
<b>Form</b>	Liquid
<b>Purification</b>	Antigen affinity purification
<b>Isotype</b>	IgG
<b>Recommend Usage</b>	Immunohistochemistry (1:500-1:1000) Immunofluorescence (1-4 ug/mL) Western Blot (1:100-1:250) The optimal working dilution should be determined by the end user.
<b>Storage Buffer</b>	In PBS, pH 7.2 (40% glycerol, 0.02% sodium azide)
<b>Storage Instruction</b>	Store at 4°C. For long term storage store at -20°C. Aliquot to avoid repeated freezing and thawing.
<b>Note</b>	This product contains sodium azide: a POISONOUS AND HAZARDOUS SUBSTANCE which should be handled by trained staff only.

## Applications

- Western Blot (Transfected lysate)

Western blot analysis of Lane 1: Negative control (vector only transfected HEK293T lysate) Lane 2: Over-expression lysate (Co-expressed with a C-terminal myc-DDK tag (~3.1 kDa) in mammalian HEK293T cells) with IFITM1 polyclonal antibody (Cat # PAB29474) at 1:500-1:1000 dilution.

- Immunohistochemistry (Formalin/PFA-fixed paraffin-embedded sections)

Immunohistochemical staining of human lymph node with IFITM1 polyclonal antibody (Cat # PAB29474) shows strong cytoplasmic positivity in lymphoid cells outside reaction centra at 1:200-1:500 dilution.

- Immunofluorescence

Immunofluorescent staining of human cell line HEK 293 with IFITM1 polyclonal antibody (Cat # PAB29474) at 1-4 ug/mL concentration shows positivity in nucleus and vesicles.

## Gene Info — TIPIN

Entrez GeneID	<a href="#">54962</a>
---------------	-----------------------

Gene Name	TIPIN
-----------	-------

Gene Alias	FLJ20516
------------	----------

Gene Description	TIMELESS interacting protein
------------------	------------------------------

Omim ID	<a href="#">610716</a>
---------	------------------------

Gene Ontology	<a href="#">Hyperlink</a>
---------------	---------------------------

Other Designations	timeless-interacting protein
--------------------	------------------------------

## Disease

- [Depressive Disorder](#)
- [Sleep Disorders](#)