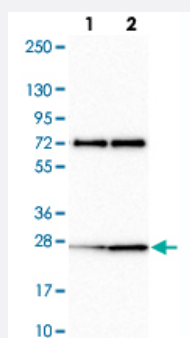


CLK2 polyclonal antibody

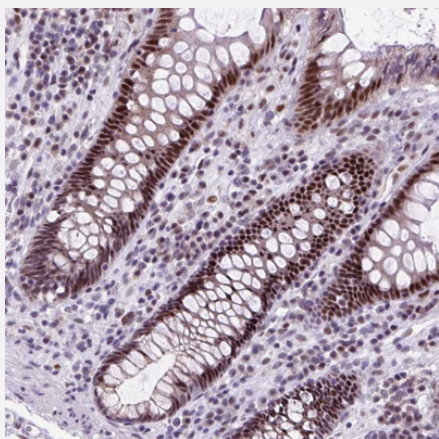
Catalog # PAB29463 Size 100 uL

Applications



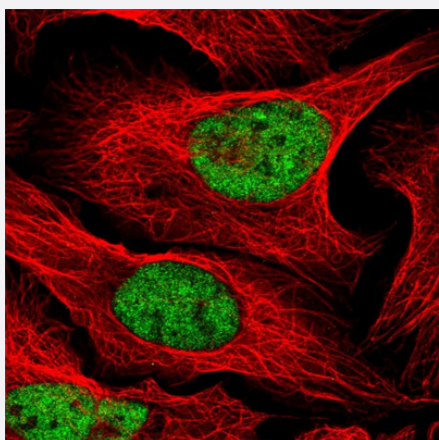
Western Blot (Cell lysate)

Western blot analysis of Lane 1: Human cell line RT-4 Lane 2: Human cell line U-251MG sp with CLK2 polyclonal antibody (Cat # PAB29463) at 1:100-1:250 dilution.



Immunohistochemistry (Formalin/PFA-fixed paraffin-embedded sections)

Immunohistochemical staining of human colon with CLK2 polyclonal antibody (Cat # PAB29463) shows strong nuclear positivity in glandular cells at 1:50-1:200 dilution.



Immunofluorescence

Immunofluorescent staining of human cell line U-2 OS with CLK2 polyclonal antibody (Cat # PAB29463) at 1-4 ug/mL concentration shows positivity in nucleus but excluded from the nucleoli.

Specification

Product Description	Rabbit polyclonal antibody raised against recombinant human CLK2.
Immunogen	Recombinant protein corresponding to human CLK2.
Sequence	HPRRYHSSERGSRGSYREHYRSRKHKRRRSRSWSSSSDRTRRRRRREDSYHVRSRSSYDDRSSDR
Host	Rabbit
Reactivity	Human
Form	Liquid
Purification	Antigen affinity purification
Isotype	IgG
Recommend Usage	Immunohistochemistry (1:50-1:200) Immunofluorescence (1-4 ug/mL) Western Blot (1:100-1:250) The optimal working dilution should be determined by the end user.
Storage Buffer	In PBS, pH 7.2 (40% glycerol, 0.02% sodium azide)
Storage Instruction	Store at 4°C. For long term storage store at -20°C. Aliquot to avoid repeated freezing and thawing.
Note	This product contains sodium azide: a POISONOUS AND HAZARDOUS SUBSTANCE which should be handled by trained staff only.

Applications

- Western Blot (Cell lysate)

Western blot analysis of Lane 1: Human cell line RT-4 Lane 2: Human cell line U-251MG sp with CLK2 polyclonal antibody (Cat # PAB29463) at 1:100-1:250 dilution.

- Immunohistochemistry (Formalin/PFA-fixed paraffin-embedded sections)

Immunohistochemical staining of human colon with CLK2 polyclonal antibody (Cat # PAB29463) shows strong nuclear positivity in glandular cells at 1:50-1:200 dilution.

- Immunofluorescence

Immunofluorescent staining of human cell line U-2 OS with CLK2 polyclonal antibody (Cat # PAB29463) at 1-4 ug/mL concentration shows positivity in nucleus but excluded from the nucleoli.

Gene Info — CLK2

Entrez GeneID [1196](#)**Gene Name** CLK2**Gene Alias** MGC61500, hCLK2**Gene Description** CDC-like kinase 2**Omim ID** [602989](#)**Gene Ontology** [Hyperlink](#)

Gene Summary This gene encodes a member of the CLK family of dual specificity protein kinases. CLK family members have been shown to interact with, and phosphorylate, serine- and arginine-rich (SR) proteins of the spliceosomal complex, which is a part of the regulatory mechanism that enables the SR proteins to control RNA splicing. Note that this gene is distinct from TELO2 gene (GeneID:9894), which shares CLK2 and hCLK2 symbol aliases in common with this gene, but encodes a protein that is involved in telomere length regulation. [provided by RefSeq]

Other Designations CLK kinase|dual specificity protein kinase CLK2