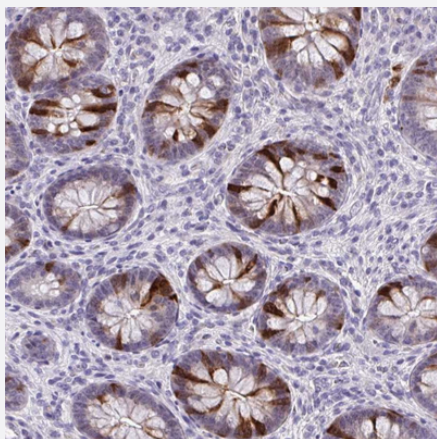


# CDC20 polyclonal antibody

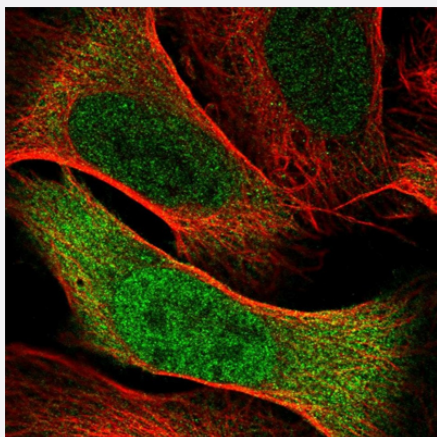
Catalog # PAB29462      Size 100 uL

## Applications



### Immunohistochemistry (Formalin/PFA-fixed paraffin-embedded sections)

Immunohistochemical staining of human appendix with CDC20 polyclonal antibody (Cat # PAB29462) shows strong cytoplasmic and nuclear positivity in glandular cells.



### Immunofluorescence

Immunofluorescent staining of human cell line U-2 OS with CDC20 polyclonal antibody (Cat # PAB29462) at 1-4 ug/mL concentration shows positivity in cytoplasm and nucleus but excluded from the nucleoli.

## Specification

<b>Product Description</b>	Rabbit polyclonal antibody raised against recombinant human CDC20.
<b>Immunogen</b>	Recombinant protein corresponding to human CDC20.
<b>Sequence</b>	TPTKKEHQKAWALNLNGFDVEEAKILRLSGKPQNAPEGYQNRLKVLYSQKATPGSSRKTCRYIPS LPDRILDAPEIRNDY

Host	Rabbit
Reactivity	Human
Form	Liquid
Purification	Antigen affinity purification
Isotype	IgG
Recommend Usage	Immunohistochemistry (1:20-1:50) Immunofluorescence (1-4 ug/mL) The optimal working dilution should be determined by the end user.
Storage Buffer	In PBS, pH 7.2 (40% glycerol, 0.02% sodium azide)
Storage Instruction	Store at 4°C. For long term storage store at -20°C. Aliquot to avoid repeated freezing and thawing.
Note	This product contains sodium azide: a POISONOUS AND HAZARDOUS SUBSTANCE which should be handled by trained staff only.

## Applications

- Immunohistochemistry (Formalin/PFA-fixed paraffin-embedded sections)

Immunohistochemical staining of human appendix with CDC20 polyclonal antibody (Cat # PAB29462) shows strong cytoplasmic and nuclear positivity in glandular cells.

- Immunofluorescence

Immunofluorescent staining of human cell line U-2 OS with CDC20 polyclonal antibody (Cat # PAB29462) at 1-4 ug/mL concentration shows positivity in cytoplasm and nucleus but excluded from the nucleoli.

## Gene Info — CDC20

Entrez GeneID	<a href="#">991</a>
Gene Name	CDC20
Gene Alias	CDC20A, MGC102824, bA276H19.3, p55CDC
Gene Description	cell division cycle 20 homolog (S. cerevisiae)
Omim ID	<a href="#">603618</a>
Gene Ontology	<a href="#">Hyperlink</a>

**Gene Summary**

CDC20 appears to act as a regulatory protein interacting with several other proteins at multiple points in the cell cycle. It is required for two microtubule-dependent processes, nuclear movement prior to anaphase and chromosome separation. [provided by RefSeq]

**Other Designations**

CDC20 cell division cycle 20 homolog|OTTHUMP00000008571|OTTHUMP00000008572|cell division cycle 20

## Pathway

- [Cell cycle](#)
- [Ubiquitin mediated proteolysis](#)

## Disease

- [Genetic Predisposition to Disease](#)
- [Kidney Failure](#)
- [Ovarian Neoplasms](#)